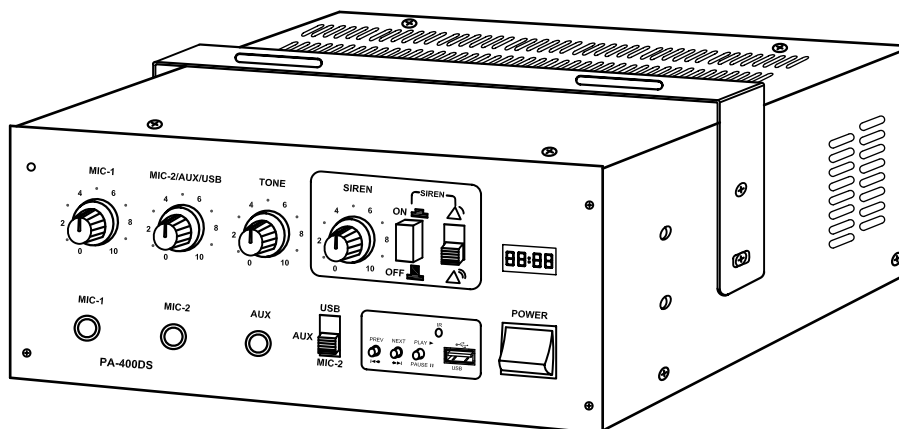


MOBILE PA AMPLIFIER

40W RMS / 50W Max.

PA-400DS



Operates on 12V Car Battery

Powerful Sound System for:
Crowd Control, Police Patrol Vehicles, Ambulances
Emergencies, Announcements / Publicity, Electioneering

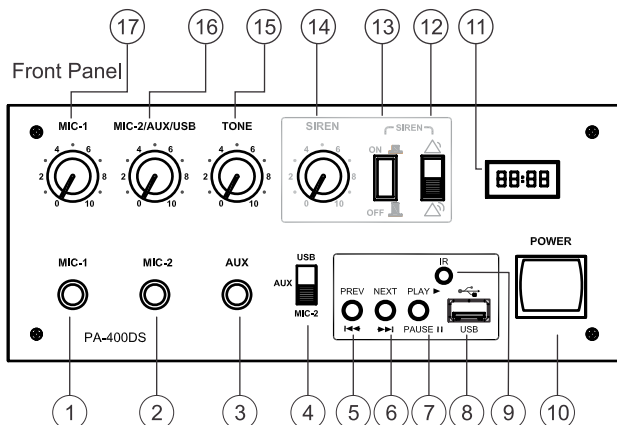
FEATURES

- Easy to install in any vehicle.
- Compact Rugged Construction with Front Panel Controls.
- Two-Mic Inputs, one AUX Input for connecting to any Cassette/CD Player.
- Two-Tone siren selectable through a switch.
- Output impedance of strip (COM - 4Ω) is Auto-Matching to speakers with 4Ω to 16Ω impedance.
- 100V Output on two pin terminal strip for use with LMT.



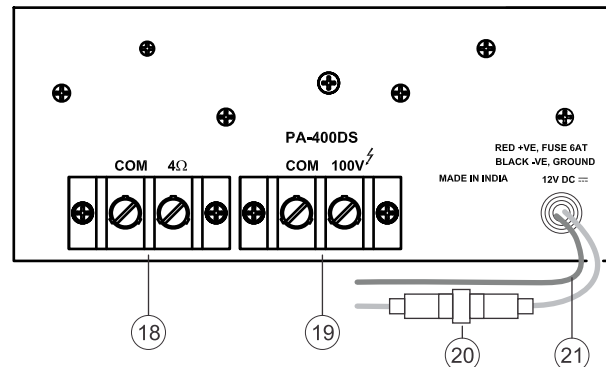
-
- ♦ Thank you for purchasing the Mobile PA Amplifier.
 - ♦ Please read this manual thoroughly before making connections and turning on the power. Following the instructions in this manual will enable you to obtain optimum performance from your new Mobile PA Amplifier.
 - ♦ Please retain this manual for future reference.

FRONT & REAR PANEL CONTROLS & FEATURES



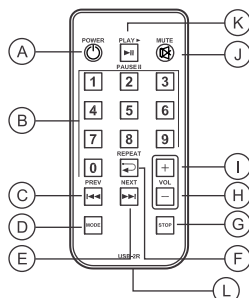
1. **MIC-1 Input Jack Socket**
2. **MIC-2 Input Jack Socket**
3. **AUX Input Jack:** This input accepts signal from audio output of tuner pre amplifier and video player.
4. **MIC-2/AUX/USB Selector Switch**
5. **PREV ◀◀** To select the previous track.
6. **NEXT ▶▶** To select the next track.
7. **PLAY ▶ / PAUSE II**: Press Play/Pause once to Pause when music is already playing. Press Play/Pause again to resume playing.
8. **USB SOCKET**: Insert the USB drive here. Ensure that the USB drive is inserted in the correct direction.
9. **IR SENSOR**: for operating remote control.
10. **Power ON/OFF Switch**: Push to switch ON. Push again to switch OFF.
11. **DISPLAY**: Displays the track played.

Rear Panel

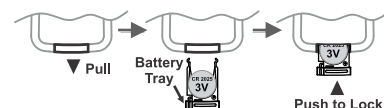


12. **SIREN TONE Selector Switch**
13. **SIREN ON/OFF Push Switch**
14. **SIREN Volume Control**
15. **Tone Control**
16. **MIC-2/AUX/USB (MP3 Player) Volume Control**
17. **MIC Volume Control**
18. **Speaker Terminal Strip (4Ω-16Ω)**
For connecting low impedance speakers.
19. **Speaker Terminal Strip (100V)**
For connecting speaker with line matching transformers.
20. **Fuse Rating 6 Amp. 250V (T 6A L)**
21. **Battery Connection Wires**
Red Wire fitted with In-line fuse for connection to positive (+) terminal. Black wire for connection to negative (-) terminal.

Remote Control



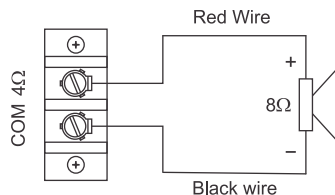
- A. **Power**: Press once to switch off MP3 digital player, press again to switch ON.
- B. Number key 0 to 9. To select the track number to be played.
- C. **◀◀**: To select the previous track.
- D. **MODE**: not in use.
- E. **▶▶**: Press to select the next track.
- F. **↺** Press once to repeat the song being played. Press again to repeat all the songs.
- G. **STOP**: Press to stop the track being played.
- H. **Vol-**: Press to decrease the volume of Digital Player.
- I. **Vol+**: Press to increase the volume of Digital Player.
- J. **MUTE**: Press once to mute the sound, press again to resume the sound.
- K. **▶IPLAY/PAUSE**: Press once to Pause when music is already playing. Press again to resume playing.
- L. **Battery Replacement**: Pull out the battery tray and replace the battery with positive electrode facing upwards as shown in fig. below. Push the battery compartment back to the close position. Use CR2025 or equivalent lithium coin cell.



OPERATING INSTRUCTIONS

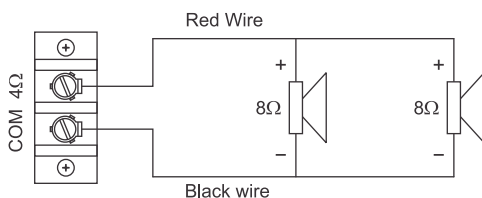
When one horn speaker with 8Ω impedance is to be installed:

When a horn speaker like SUH-25 / UHC-25 with 8Ω impedance is connected to COM-4Ω tap (this is an under loading condition), the power output delivered to the horn speaker will not exceed 20-25 watts, which is well within the safe handling capacity of the unit horn. See sketch below:



Installing two horn speakers (each having 8Ω impedance):

These must be connected in parallel as shown in the sketch below. The resultant impedance will be 4Ω. When connected to COM-4Ω terminal PA-400SM will deliver full 40 watts power, feeding each horn speaker with 20 watts, which is well within their handling capacity.



Resultant impedance = $8\Omega / 2 = 4\Omega$

Connecting any other types of loudspeaker:

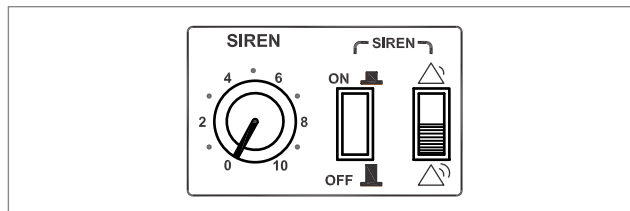
Other types of loudspeakers can be operated with PA-400SM. For instance one AU-40 (16Ω impedance) fitted with WFA / WFB horn will work satisfactorily when connected to COM and 4Ω terminal. Similarly two or even up to four of AU-40 connected in parallel to COM and 4Ω will also work satisfactorily.

Siren Section:

Two tone siren has been provided. The two tones are whaling for police jeeps and yelping for ambulances. A selector switch has been provided to select the tone of the siren.

Siren Operation:

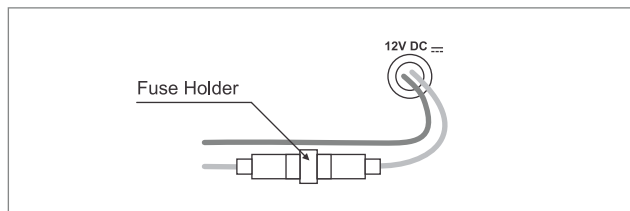
To activate the siren:



1. Put the power switch to ON position.
2. Put the siren switch to ON position.
3. Select the siren tone using the tone selector switch.
4. Adjust the volume level.

Fuse Replacement:

A 6 Amp fuse has been provided with in-line fuse holder to protect the amplifier against short circuit. In case fuse blows replace one with the same rating.



• Safety Instructions

Read the Instructions: Please read all the instructions in this section carefully before installation or use of the product. All the safety instructions must be followed.

Retain the Instructions: Please retain this Instruction Manual for future reference.



This symbol, wherever it appears, alerts you to the presence of uninsulated hazardous voltage that may be sufficient to constitute a risk of electric shock. External wiring to any terminal marked with this symbol must be done by a trained and instructed person only.



This symbol, wherever it appears adjacent to a component, alerts you that the concerned component can only be replaced by another of the exact same specifications.

WARNING

- To reduce the risk of electric shock, do not remove the top cover. No user serviceable parts inside. Refer all servicing to qualified personnel only.
- Before replacing any fuse, make sure the set is switched off and

disconnected from the power source. Replace a fuse only with another of exactly same specification.

CAUTIONS

Water & Moisture: To reduce the risk of fire or electrical shock, do not expose this set to rain or moisture. Do not use this set near water or in a wet location. Do not keep any object filled with liquid, such as a vase, on top of this set.

Power Source: Use only with 12V DC battery. This set uses negative ground system. Connect battery positive to the red wire shown on page 2, and battery negative to the black wire.

Stability: Fix and clamp the set securely before use.

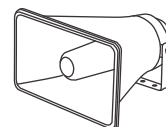
SPECIFICATIONS

Power Output	50 Watts RMS Max., 40 Watts RMS at 10% THD, 35 Watts RMS at 5% THD
Input / Sensitivities	2 × Mic 1mV/4.7k Ω , 1 × Aux 100mV/330k Ω Impedance, USB-A, MP3 Player with remote control
Frequency Response	100Hz-10,000Hz \pm 3dB
Tone Control	0 to -10dB at 10kHz
Signal to Noise Ratio	60dB
Output Impedance	4 Ω 100 V Line (for use with LMT)
Sirens	Built-in operation through a push button switch. Two Tones available: Whaling & Yelping, selectable through a selector switch.
Power Supply	12V DC (Car Battery), Standard Voltage 13.2V
Protection	DC: Fuse 6Amp. (T 6A L)
Average Battery Consumption	2.5 Amps
Dimensions	W190 × H80 × D240 mm
Weight	2.30kg approx. (with clamps)

RECOMMENDED OPTIONAL ACCESSORIES



Microphone: MM-60M



Horn Speaker: SUH-25 / SUH-40 / SUH-25XT / SUH-40XT