

Please read this guide first!

Our valued customer,

Please read this manual before using the product.

Thank you for choosing product. We want your product, produced with high quality and technology, to offer you the best efficiency. Therefore, read this entire manual and other supplied documents carefully before using the product.

Take into account all information and warnings specified in the user manual. In this way, you can protect yourself and your product against possible dangers. Keep the user manual. If you give the product to someone else, give the user manual along with it.

The following symbols appear in the user manual and on the product:

ANNOUNCEMENT



Danger that could result in death or injury.

ANNOUNCEMENT



Risk of electric shock!

WARNING



Important information or useful tips for use.

ATTENTION



Read the user manual.

DANGER



Flammable material, warning of fire hazard.

DANGER



Danger that may result in burns due to contact with hot surfaces.

Safety Instructions

- This section contains safety instructions to help prevent personal injury or property damage.
- Our company cannot be held responsible for any damages that may occur if these instructions are not followed.

ANNOUNCEMENT



Always have the installation and repair operations done by the manufacturer or an authorized service.

ANNOUNCEMENT



Use only original spare parts and accessories.

ANNOUNCEMENT



Do not repair or replace any part of the product unless expressly stated in the user manual.

ANNOUNCEMENT



Do not make technical changes to the product.

Additional Information

- [Purpose of usage](#)
- [Child, Vulnerable Person and Pet Safety](#)
- [Electrical Safety](#)
- [Transport Security](#)
- [Installation Security](#)
- [Usage Safety](#)
- [Food Storage Safety](#)
- [Maintenance and Cleaning Safety](#)
- [Disposal of the Old Product](#)

Purpose of usage

- This product is not suitable for commercial use and should not be used for purposes other than its intended use.
- This product is designed to be used indoors, at home and similar places.

For example;

In staff kitchens of stores, offices and other work environments,

In farmhouses,

In the environments used by customers of hotels, motels and other accommodation facilities,

In hostel type environments,

In food service and similar non-retail applications.

- The product should not be used on a boat, in a caravan, or in open or closed outdoor spaces such as balconies or terraces.
Exposing the product to rain, snow, sun and wind may create a fire risk.

Child, Vulnerable Person and Pet Safety

- This product can be used by children aged 8 years and above and persons whose physical, sensory or mental capabilities are not fully developed or who lack experience and knowledge, as long as they are supervised or trained on the safe use of the product and its hazards.
- Children between the ages of 3 and 8 are allowed to load and unload the refrigerator.
- Electrical products are dangerous to children and pets. Children and pets should not play with, climb on, or climb into the product.
- Children and pets should be kept away from the bottom of the cabin (compressor) area where the electrical parts are located.
- Cleaning and user maintenance operations should not be carried out by children unless they are supervised by someone.
- Keep packaging materials away from children. There is a risk of injury and suffocation.

Electrical Safety

- The product should not be plugged in during installation, maintenance, cleaning, repair and transportation.

If the power cable is damaged, it must be replaced by an authorized service in order to prevent possible hazards.

- Do not squeeze the power cord under or behind the product. Do not place a heavy object on the power cord. The power cord should not be excessively bent, crushed or come into contact with any heat source.
- Do not use an extension cord, multiple socket or adapter to operate the product.
- Portable multiple socket outlets or portable power supplies may overheat and cause a fire. Therefore, do not place multiple socket outlets or portable power supplies behind or near the product.
- Do not plug the product into a loose or damaged socket. Such connections may overheat and cause a fire.
- The plug must be in an easily accessible place. If this is not possible, there must be a device (fuse, key, switch, etc.) on the electrical installation to which the product is connected that complies with electrical regulations and separates all poles from the network.
- Do not touch the plug with wet hands.
- When removing the plug from the socket, pull it by the plug, not by the cable.

Transport Security

- Unplug the product before moving it.
- The product is heavy, do not carry it alone. If the product falls on you, it may cause injuries. Do not hit or drop the product while carrying it.
- When carrying the product, always close its doors and do not hold it by the doors.
- Be careful not to damage the cooling system and pipes during transportation of the product.

Installation Security

- To make the product ready for use, make sure that the electrical and plumbing systems are suitable by referring to the information in the user manual. If the installation is not suitable, call a licensed electrician and plumber to make the necessary arrangements. Otherwise, electric shock, fire, product problems or injury may occur.
- This product is designed for use at an altitude of up to 2000 meters above sea level.
- Before installing the product, check for any damage. If the product is damaged, do not install it!
- Be sure to use personal protective equipment (gloves, etc.) when installing, maintaining and repairing the product. Risk of injury!
- Place the product on a clean, flat and hard surface and balance it with the help of adjustable feet (by turning the front feet to the right or left). Otherwise, the refrigerator may tip over and cause injury.
- The place where the product will be installed must be a dry and ventilated place. There should be no carpets, rugs or similar covers under the product. There may be a risk of fire due to insufficient ventilation!
- Do not block the front or top of the ventilation holes. Otherwise, energy consumption will increase and damage to your product may occur.
- When placing the product, make sure that the power cord is not damaged or pinched.
- The product should not be connected to supply systems such as solar power supplies. Otherwise, your product may be damaged due to sudden voltage changes!
- The more refrigerant a refrigerator contains, the larger the location it should be installed in. In very small spaces, if there is a gas leak in the cooling system, a flammable gas-air mixture may form. The volume of space required for every 8 grams of refrigerant gas is at least 1 m³. The amount of refrigerant gas in your product is written on the Type Label.
- The location where the product is installed should not be exposed to direct sunlight and should not be near a heat source such as a stove, radiator, etc. If the installation of the product near a heat source cannot be avoided, a suitable insulation board should be used or the minimum distance to the heat source should be as follows:
 - At least 30 cm away from heat sources such as stoves, ovens, heating units and stoves,
 - At least 5 cm away from electric ovens.
- Your product is a protection class type I device.
- Connect the product to a grounded socket suitable for the Voltage, Current and Frequency values specified on the type label. The socket must have a fuse rated at 10A – 16A. Our company will not be responsible for any damages that may occur if the product is used without grounding and electrical connection in accordance with local and national regulations.
- The product's power plug should not be plugged into the socket during installation. Otherwise there is a risk of electric shock and injury!
- Do not plug the product into sockets that are loose, out of socket, broken, dirty, oily, or at risk of contact with water. These types of connections may cause overheating and fire.
- Place the product power cable and hoses (if any) in a way that does not pose a tripping hazard.
- Moisture and liquid penetration into live parts or the power cord may cause a short circuit. For this reason, do not use the device in damp or splashing areas (e.g. garage, laundry room).
- Never connect your refrigerator to electricity saving devices. Such systems are harmful to the product.
- There is a danger of contact with electrical parts when the electronic card cover and compressor rear cover (if included in the product) are removed. Do not disassemble the product's card cover or compressor rear cover (if present on the product). There is a risk of electric shock!

Usage Safety

- Never use chemical solvents on the product. These substances carry the risk of explosion.
- In case of a malfunction in the product, unplug the product and do not operate it until it is repaired by the authorized service. There is a risk of electric shock!
- Do not place a flame source (e.g. candle, cigarette) on or near the product.
- Do not stand on the product. Risk of falling and injury!
- Do not damage the cooling system pipes using cutting or piercing tools. If gas pipes, pipe extensions or surface coatings are punctured, the refrigerant that will spray out will cause skin irritation and eye injuries.
- Do not place or use electrical appliances inside the refrigerator/freezer unless recommended by the manufacturer.
- Be careful not to trap any part of your hands or body in any moving parts inside the product. Be careful not to get your fingers caught between the door and the cabinet. If there are children around, be careful when opening and closing the door.
- Never put ice cream, ice cubes or frozen foods in your mouth right after taking them out of the freezer. There is a risk of freezer burn!
- Do not touch the inside walls of the freezer, metal parts or products stored in the freezer with wet hands. There is a risk of freezer burn!
- Do not place cans and bottles containing carbonated drinks or liquids that can freeze in the freezer compartment. The cans or bottles may explode. There is a risk of injury and material damage!
- Do not use or place temperature-sensitive substances such as flammable sprays, flammable objects, dry ice or other chemicals near the refrigerator. There is a risk of burning and explosion!
- Do not store explosive materials, such as aerosol cans containing flammable materials, inside your product.
- Do not place containers containing liquids uncovered on the product. Splashing water on an electrical part may cause electric shock or fire hazard.
- This product is not suitable for the storage and cooling of medicines, blood plasma, laboratory preparations or similar substances and products subject to the Medicinal Products Directive.
- If the product is used for purposes other than intended, it may cause damage or deterioration of the products stored inside.
- If your refrigerator has Blue light, do not look at this light with optical instruments. Do not look directly at the UV LED lamp for a long time. Ultraviolet rays may cause eye fatigue.
- Do not fill the product beyond its capacity. Injuries or damage may occur if the contents of the refrigerator fall when the door is opened. Similar problems may occur when any object is placed on the product.
- Be sure to clear away any ice or water that may have fallen onto the floor to avoid injury.
- Replace the shelves/bottle shelves on the door of your refrigerator only when the shelves are empty. There is a risk of injury!
- Do not place anything that might fall/overturn on the product. When opening and closing the door, items may fall and cause injury and/or property damage.
- Do not hit or apply excessive force to glass surfaces. Glass breakage may result in personal injury and/or property damage.
- The cooling system in your product contains R600a gas. The type of gas used in the product is stated on the type label. This gas is flammable. Therefore, be careful not to damage the cooling system and pipes during use. In case the pipes are damaged;
 1. Do not touch the product or the power cord.
 2. Keep away from potential fire sources that could cause the product to catch fire.
 3. Ventilate the environment where the product is located. Do not use a fan.

If the product is damaged and you observe gas escaping, please stay away from the gas. If the gas comes into contact with your skin, it can cause frostbite.

Before throwing away old and unusable products:

1. Pull out the power plug and remove it from the socket.
2. Cut the power cord and disconnect it from the device along with the plug.
3. To make it difficult for children to get into the appliance, do not remove the shelves and drawers.
4. Remove the doors.
5. Keep the product in a way that it cannot tip over.

6. Do not allow children to play with the worn product.

- Never destroy the product by throwing it into a fire. There is danger of explosion.
- If there is a lock on the door of the product, the key should be kept out of reach of children.

Food Storage Safety

To avoid food spoilage, please pay attention to the following warnings:

- Keeping the doors open for a long time may cause the temperature inside the product to rise.
- Clean food contact and accessible drain systems regularly.
- Clean water tanks that have not been used for 48 hours and mains-fed water systems that have not been used for more than 5 days.
- Store raw meat and fish products in appropriate compartments in the product so that they do not drip or come into contact with other foods.
- Two-star freezer compartments are used for storing pre-filled foods, making and storing ice and ice cream.
- One, two and three star compartments are not suitable for freezing fresh food.
- If the refrigerator has been left empty for a long time, turn it off, defrost it, clean and dry the product to protect the body of the product.

Maintenance and Cleaning Safety

- Before cleaning or maintaining the refrigerator, unplug it and disconnect the power from the fuse.
- If you are going to move the product for cleaning purposes, do not pull it by hanging on the door handle. If the handle is pulled too hard, it may cause injury.
- Do not put your hands, feet and metal objects under or behind the refrigerator. It may cause personal injury due to pinching or any sharp edges.
- Do not clean by spraying or pouring water on or inside the product. There is a risk of electric shock and fire.
- When cleaning the product, do not use sharp and abrasive tools or household cleaning products, detergents, gas, gasoline, thinner, alcohol, polish, etc. Use only cleaning and maintenance products that are not harmful to foodstuffs inside the product.
- Never use steam or steam-assisted cleaning materials to clean or defrost the product. Steam may come into contact with electrically live areas of your refrigerator, causing a short circuit or electric shock.
- Do not use any mechanical tools or other devices to accelerate the defrosting process other than those recommended by the manufacturer.
- Be careful not to allow water to enter the product's ventilation holes, electronic circuits or lighting. Otherwise, there is a risk of fire or electric shock.
- Use a clean, dry cloth to wipe off any foreign matter or dust on the plug pins. Do not use a wet or damp cloth when cleaning the plug. Otherwise, there is a risk of fire or electric shock.

Disposal of the Old Product

Follow the instructions below when disposing of your old product;

- To prevent children from accidentally locking themselves into the product, if the product has a door lock; disable the lock.
- Coolant splashes can be harmful to the eyes. Do not damage any parts of the cooling system when disposing of the product.
- The oil in the compressor can be fatal if swallowed or penetrates the respiratory tract.
- The cooling system in your product contains R600a gas as stated on the type label. This gas is flammable. Never destroy the product by throwing it into a fire. There is danger of explosion!

Environmental Instructions

Additional Information

[Compliance with WEEE Regulation and Disposal of Waste Product](#)

[Packaging Information](#)

Compliance with WEEE Regulation and Disposal of Waste Product

This product does not contain harmful and prohibited substances specified in the "Regulation on the Control of Waste Electrical and Electronic Equipment" published by the Ministry of Environment and Urbanization of the Republic of Turkey.

DANGER



It complies with the WEEE Regulation. This product is manufactured from high quality parts and materials that are recyclable and reusable. Therefore, do not dispose of the product with household or other waste at the end of its service life. Take it to a collection point for the recycling of electrical and electronic equipment. Ask your local government about these collection points. Help protect the environment and natural resources by recycling used products.

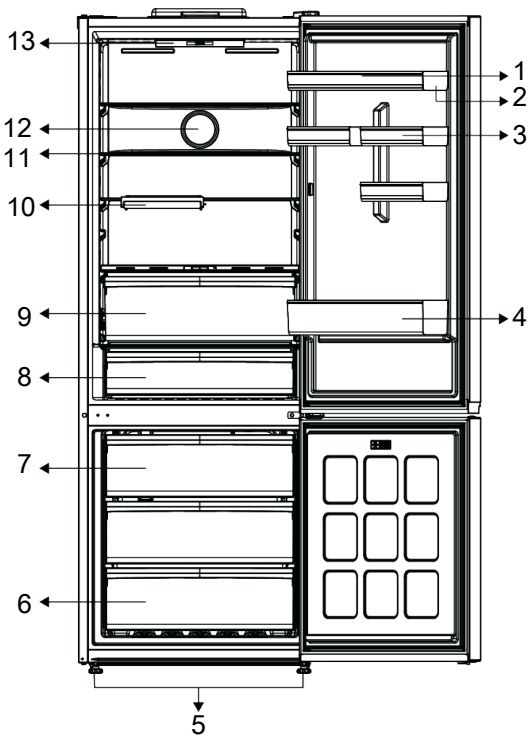
Packaging Information

ANNOUNCEMENT



The packaging of the product is made of recyclable materials in accordance with our National Legislation. Do not dispose of packaging waste together with household or other waste, dispose of it at packaging collection points specified by the local authority.

Your fridge



one	Ovarian	2	Adjustable Door Shelf
3	* Small Door Rack	4	Bottle Rack
5	Adjustable Feet	6	Freezer Compartment
7	Freezer Container	8	Cold Storage Drawer
9	crisper	10	* Folding Shelf
11th	Adjustable Shelf	12	Fan
13	Lighting		

***Optional:** The figures in this user manual are schematic and may not be exactly compatible with your product. If the product you purchased does not contain the relevant parts, it is valid for other models.

Setup

WARNING



Read the "Safety Instructions" section first!

Additional Information

[Right Place for Installation](#)

[Electrical connection](#)

[Installing Plastic Wedges](#)

[Adjusting the Feet](#)

[Hot Surface Warning](#)

Right Place for Installation

To make the product ready for use, make sure that the electrical installation and water installation are appropriate by looking at the information in the user manual. If not, call a licensed electrician and plumber and have the necessary arrangements made.

WARNING



WARNING:

The manufacturer is not responsible for any damages that may be caused by operations carried out by unauthorized persons.

WARNING



WARNING:

The product must not be plugged into a power outlet during installation. Otherwise, there is a risk of death or serious injury!

WARNING



WARNING:

If the doorway of the room where the product will be placed is too narrow for the product to pass through, remove the door of the room and turn the product sideways to pass through;

- Place the product on a flat surface to avoid shocks.
- Install the product at least 30 cm away from heat sources such as stoves, radiators and stoves, and at least 5 cm away from electric ovens.
- Do not expose the product to direct sunlight and do not keep it in a humid place.
- In order for the product to operate efficiently, there must be adequate air circulation around it. If the product is to be placed in a recessed area in the wall, make sure there is at least a 5 cm gap between it and the ceiling and side walls.
- Check that the rear wall spacer (if supplied) is in place.
- If the part is missing, lost or dropped, position the product so that there is at least 5 cm of space between the rear surface of the product and the room wall. The space behind is important for the efficient operation of the product.

Electrical connection

WARNING



Do not connect using extension cords or multiple sockets.

WARNING



Damaged power cable must be replaced by the Authorized Service.

ANNOUNCEMENT



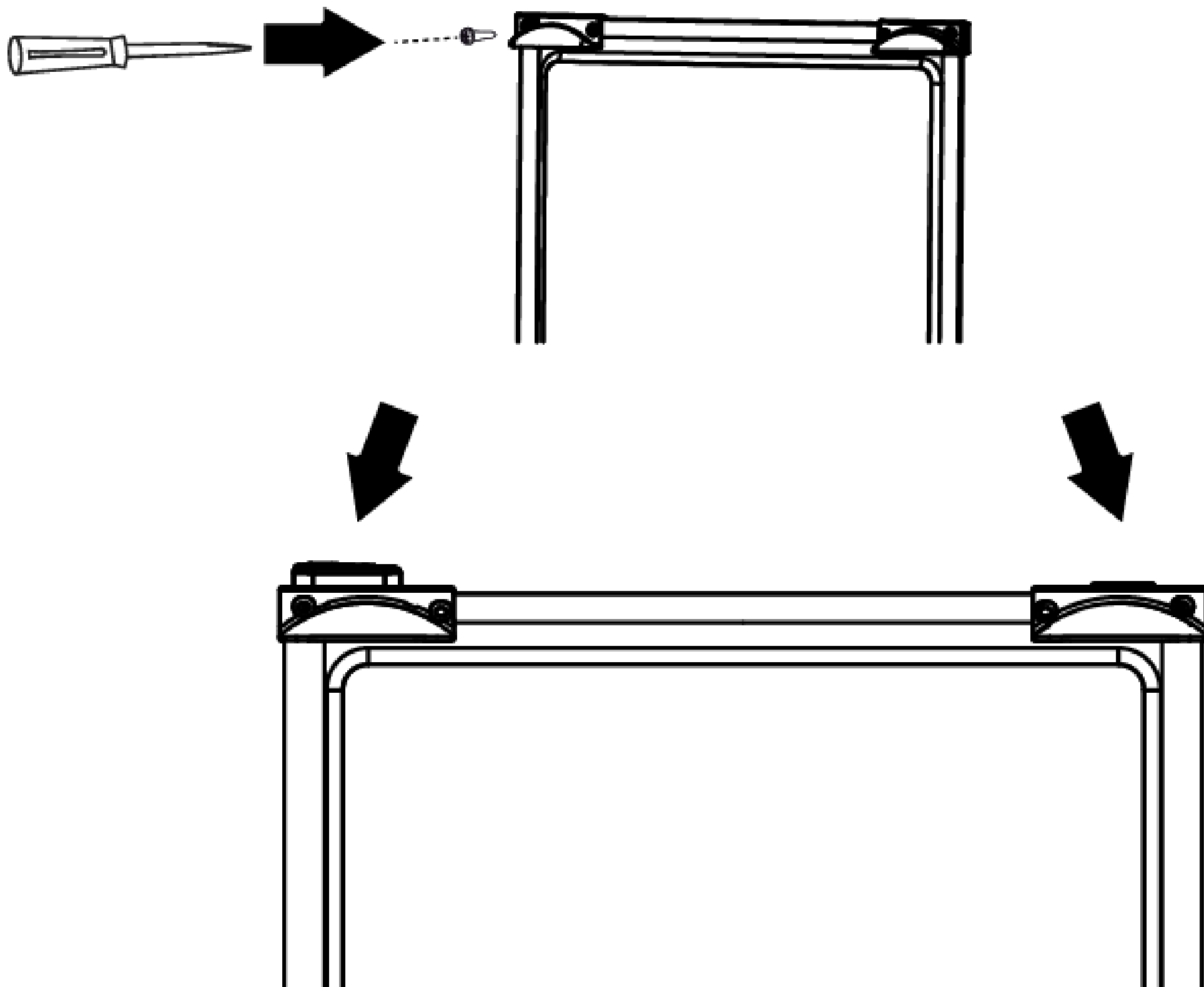
If two coolers are placed side by side, there should be at least 4 cm of space between them.

- Our company will not be responsible for any damages that may occur if the product is used without grounding and electrical connection in accordance with national regulations.
- The power cord plug must be easily accessible after installation.
- Do not use an extension cable or wireless multiple group socket between your refrigerator and the wall socket.

Installing Plastic Wedges

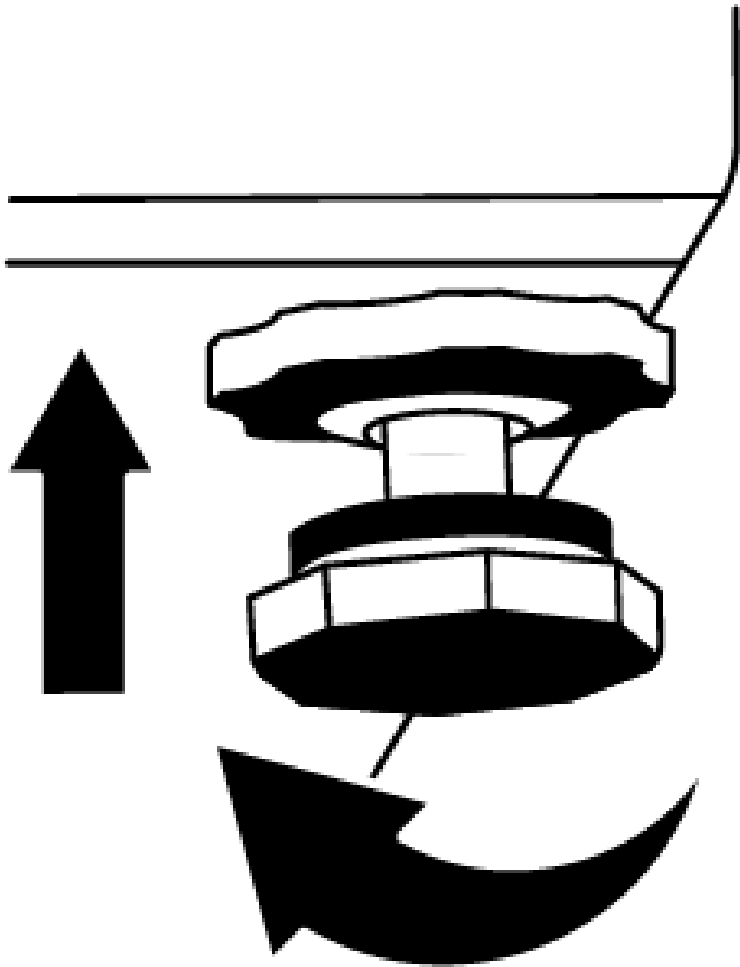
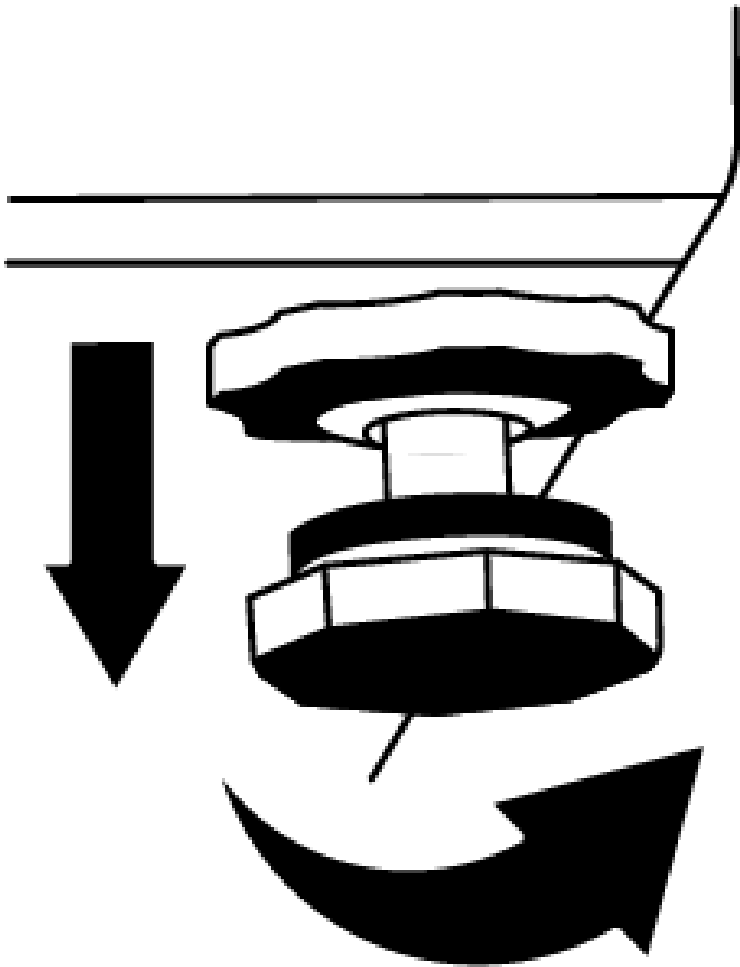
Plastic wedges included in the product are used to maintain the distance between the product and the wall to ensure air circulation.

1. To install the wedges, remove the screws on the product and use the screws provided with the plastic wedges.
2. Attach the 2 plastic wedges to the rear ventilation cover as shown in the figure.



Adjusting the Feet

If the product is unstable where you place it, adjust it by turning the front adjustment feet to the right or left.



Hot Surface Warning

The side walls of your product are equipped with coolant pipes to improve the cooling system. High temperature fluid can flow across these surfaces and cause hot surfaces on the side walls. This is normal and does not require any service. Be careful when touching these areas.

Preliminary

WARNING



Read the “Safety Instructions” section first!

Additional Information

[What to Do to Save Energy.](#)

[First Use](#)

[Climate Class and Its Meanings](#)

What to Do to Save Energy

WARNING



Connecting the product to electronic energy saving systems is dangerous as it may damage the product.

- This cooling appliance is not designed to be used as a built-in appliance.
- Do not keep the doors of your refrigerator open for a long time.
- Do not put hot food or drinks in your refrigerator.
- Do not overfill the refrigerator, cooling capacity decreases when the air flow inside is blocked.
- Since hot and humid air will not enter directly when the doors of your product are not opened, your product optimizes itself under conditions sufficient to protect your food. Under these conditions, the compressor, fan, heater, defrost, lighting, indicator and other components and functions on the product operate in a way that consumes the least energy according to needs.
- In case of multiple options, glass shelves should be positioned so that they do not block the air outlets on the rear wall, preferably with the air outlets under the glass shelf. This combination can help improve air distribution and energy efficiency.
- It is highly recommended to use the bottom drawer when loading.
- Depending on the features of your product, thawing frozen food in the refrigerator compartment will both save energy and preserve the quality of the food.
- To load the most food into the freezer compartment of your refrigerator, the upper drawers should be removed and loaded onto wire/glass shelves.
- To save energy and preserve food in a better environment, food should be stored using drawers in the refrigerator compartment.
- Direct contact between the temperature sensor located in the freezer compartment and food packages should be prevented.

First Use

Before you start using your refrigerator, make sure that the preparations have been made in accordance with the instructions in the “Safety and Environmental Instructions” and “Installation” sections.

- Let the product run empty for 6 hours without any food and do not open the door unless absolutely necessary.
- It is normal for condensation to occur on the door/body shelves and on the glassware placed inside the product as a result of thermal changes caused by the opening and closing of the product door during use.

ANNOUNCEMENT



You will hear a sound when the compressor starts working. It is normal for the product to make noise even if the compressor is not working, as liquid and gas may be trapped in the cooling system.

ANNOUNCEMENT



It is normal for the front edges of the refrigerator to be warm. These areas are designed to be heated to prevent condensation.

ANNOUNCEMENT



In some models, the instrument panel turns off automatically 1 minute after the door is closed. It will be activated again when the door is opened or any button is pressed.

Climate Class and Its Meanings

Please refer to the Climate Class on the rating plate of your device. Depending on the Climate Class, one of the following information applies to your device.

- **SN:** Long-Term Temperate Climate: This cooling device is designed for use in ambient temperatures between 10°C and 32°C.
- **N:** Temperate Climate: This cooling device is designed for use in ambient temperatures between 16°C and 32°C.
- **ST:** Subtropical Climate: This cooling device is designed for use in ambient temperatures between 16°C and 38°C.
- **T:** Tropical Climate: This cooling device is designed for use in ambient temperatures between 16°C and 43°C.

Operating the Product

ANNOUNCEMENT



Read the "Safety Instructions" section first!

- Do not use any mechanical tools or other devices to accelerate the defrosting process other than those recommended by the manufacturer.
- Never use parts such as doors and drawers on your refrigerator as support or steps. This may cause the product to tip over or damage its parts.
- The product should only be used for food storage.
- If you will be away from home for a long time (for example, on vacation) and will not use the Icemaker or water dispenser, turn off the water valve. Otherwise, water leakage may occur.

Closing the product

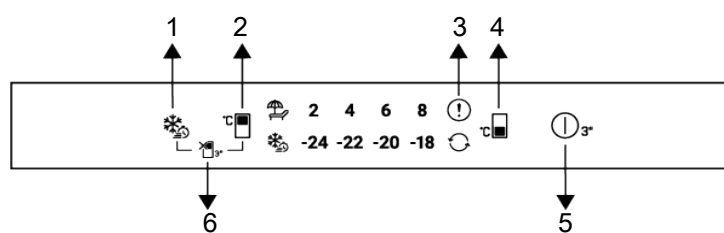
- If you are not going to use the product for a long time, unplug the product.
- Remove foods to prevent odor,
- Wait for the ice to melt, clean the interior and let it dry, leave the doors open to prevent damage to the interior body plastics.

Using Your Product

Additional Information

- [Control Panel of the product](#)
- [Storing Food in the Refrigerator Compartment
crisper](#)
- [Vegetable Technologies](#)
- [Ice Storage Area](#)
- [Change of Door Opening Direction](#)
- [Door Open Warning](#)
- [Lighting Lamp Replacement](#)
- [AeroFresh](#)
- [Fan](#)

Control Panel of the product



one	Fast Freeze Button	2	Cooler Compartment Temperature Setting Button
3	Error Status Indicator	4	Freezer Compartment Temperature Setting Button
5	Product Close Button	6	Fridge Compartment Closing (Holiday) Function Button

ANNOUNCEMENT



Read the "Safety Instructions" section first.

Audio and visual functions on the display panel help you use your refrigerator.

***Optional** : The functions shown are optional, the functions on the display panel of your product may differ in terms of shape and location.

1. Fast Freeze Button❄️⌚

When the quick freeze button is pressed, the quick freeze icon lights up and the quick freeze function is activated. The freezer compartment temperature is set to -27 °C. To cancel the function, the button must be pressed again. The quick freezing function automatically cancels itself after a while. If you want to freeze a large amount of fresh food, press the quick freeze button before putting the food in the freezer compartment.

2.Fridge Compartment Temperature Setting Button

Temperature adjustment is made for the refrigerator compartment. By pressing the button, the refrigerator compartment temperature can be adjusted to 8,6,4,2°C.

3. Error Status Indicator

This indicator will be active when the refrigerator cannot cool sufficiently or when a sensor error occurs. The freezer and cooler temperature indicators will flash in certain combinations. This situation informs the service about the error that has occurred. When you load hot foods into the freezer compartment or leave the door open for a long time, the exclamation mark may light up for a while. This is not a failure, this warning will disappear when the foods cool down or when any button is pressed.


4. Freezer Compartment Temperature Setting Key

Temperature setting is made for the freezer compartment. When the button is pressed, the freezer compartment temperature can be set to -18, -20, -22, -24 °C.

5. Product Close Button

When this button is pressed for 3 seconds, the product goes into off mode. In this mode, the refrigerator does not cool. When the button is pressed for 3 seconds again, the refrigerator starts to operate normally.

6.Fridge Compartment Closing (Holiday) Function Button

To activate the holiday function, press the button for 3 seconds. The holiday mode is activated and the holiday icon () lights up. All icons on the refrigerator compartment temperature indicator go off and the refrigerator compartment does not perform active cooling. When this function is activated, it is not appropriate to keep your food in the refrigerator compartment. The other compartments continue to cool according to their set temperatures. To cancel this function, press the button again for 3 seconds.

Storing Food in the Refrigerator Compartment

Storing Food in the Refrigerator Compartment

- If the compartment door is opened and closed frequently and left open for long periods of time, the compartment temperatures will increase significantly, which may reduce the life of the food and cause the food to spoil.
- To avoid any change in odor or taste, foods should be stored in closed containers.
- Do not store too much food in your refrigerator. To achieve better and more uniform cooling, place the food at intervals so that cold air can circulate between them.
- Allow air flow by leaving space between the food and the interior wall. If you place food against the back wall, it may freeze.
- Bring hot cooked meals to room temperature before placing them in the refrigerator. Then, you can place the warmed food on the lower shelves of your refrigerator. Do not place warm dishes near perishable foods.
- Be especially careful not to mix frozen foods with fresh foods.
- Defrost your frozen food in the fresh food compartment. In this way, you can cool the fresh food compartment by using frozen food and save energy.
- Storing unripe tropical fruits (mango, melons, papaya, banana, pineapple) in the refrigerator can speed up the ripening process, which means shorter storage time, so it is not recommended.
- You should store onions, garlic, ginger and other root vegetables in dark, cool room conditions, not in the refrigerator.
- If you notice that food has spoiled in the refrigerator, throw away that food and clean the accessories it came into contact with.
- To quickly cool down foods cooked in large pots, such as soups and stews, you can divide them into shallow containers and place them in the refrigerator.
- Do not place unpackaged foods near eggs.
- Keep fruits and vegetables separate from each other and store each type together (for example, apples with apples, carrots with carrots).
- Remove the greens from the plastic bag, wrap them in paper towels or a tea towel, and place them in the refrigerator. If you wash such foods before putting them in the refrigerator, do not forget to dry them.
- By storing fruits and vegetables that are prone to drying in perforated or open-mouthed plastic bags, you can create a humid environment and allow air flow.
- Except for extreme environmental conditions, if your product is set to the specified set values (in the recommended set value table), food will remain fresh for a longer period of time both in the fresh food compartment and in the freezer compartment.

Store Foods in Different Places According to Their Properties:	
food	Location
Egg	Door shelf
Dairy products (butter, cheese)	Zero degree (breakfast) compartment if available
Fruits, vegetables and greens	Fruit and vegetable compartment, vegetable bin or EverFresh+ compartment (if available)
Fresh meat, poultry, fish, sausage derivatives Cooked foods	Zero degree (breakfast) compartment if available
Ready-to-eat foods, packaged products, canned goods and pickles	Top shelves or door shelf
Beverages, bottles, condiments and snacks	Door shelf

Storing Food in the Freezer Compartment

- You can cool faster by activating the Fast Freezing function 4-6 hours before freezing.
- Sıcak yemekleri dondurucu bölmeye yerleştirmeden önce oda sıcaklığına getirin.
- Dondurulacak olan gıdalar, her seferinde tüketilecek kadar büyüklükte porsiyonlara bölünerek ayrı paketlerde dondurulmalıdır.
- Yiyecekleri dondurucuya koymadan önce paketlemeniz önerilir.

- Saklama süresinin geçmesini önlemek için, farklı gıdaların saklama sürelerine göre dondurma tarihini, süreyi ve yiyeceğin adını paketin üstüne yazın.
- Buzunu çözdüğünüz gıdaları hızlıca tüketin. Buzu çözölmüş gıdalar pişirilmediği sürece tekrar dondurulamaz. Buzu çözüldükten sonra tekrar dondurulmuş taze gıdaları pişirmeden tüketmek güvenli değildir.
- Taze gıda dondururken bu gıdaları halihazırda donmuş gıdalara temas ettirmeyin. Aksi takdirde, donmuş gıdaların buzunu çözölür.

Donmuş Halde Satılan Yiyecekleri Saklama

- Yiyeceği saklamanız gereken süre konusunda her zaman üreticinin talimatlarına uyun. Bu talimatlarda belirtilen süreyi aşmayın!
- Gıdanın kalitesini korumak için, satın alma işlemiyle saklama arasındaki süreyi olabildiğince kısa tutmaya çalışın.
- 18 °C veya daha düşük derecelerde saklanan donmuş gıdaları satın alın.
- Ambalajında buz vb. olan gıdaları almaktan kaçının. Bu, ürünün kısmen çözölüp tekrar donmuş olabileceği anlamına gelir. Sıcaklık, yiyeceğin kalitesini etkiler.
- Gıda üreticisi tarafından önerilen saklama süresini aşmayın. Buzluktan yalnızca ihtiyacınız kadar gıda çıkarın.
- Ortamda ekstrem koşullar olduğu durumlar haricinde, ürününüz (önerilen set değeri tablosunda) belirtilen set değerlerine ayarlanırsa, hem taze gıda bölmesinde hemde dondurucu bölmede yiyecekler daha uzun süre tazeliğini korur.
- Taze gıda bölümü daha düşük bir sıcaklığa ayarlanırsa taze meyve ve sebzeler kısmen donabilir.
- 2 yıldız bölümü önceden dondurulmuş yiyecekler için uygundur. Dondurma ve buz küpleri saklanabilir.
- Yiyecekleri 1, 2 ve 3 yıldız bölmelerde dondurmayın.

Önerilen Set Değeri Tablosu

Dondurucu Bölmesi Ayarı	Soğutucu Bölmesi Ayarı	Açıklamalar
-22°C	4°C	Bu, normal tavsiye edilen ayardır. Bu ayar ortam sıcaklığı 30°C'nin altında ise; tavsiye edilir.
-20°C	6°C	Bu ayar, ortam sıcaklığı 25°C'yi geçtiğinde tavsiye edilir.
Hızlı Dondur	4°C	Yiyeceklerinizi kısa zamanda dondurmak istediğinizde kullanın. İşlem bittiğinde önceki konumuna gire dönecektir.

Dondurucu Bölmesi Ayarı	Soğutucu Bölmesi Ayarı	Açıklamalar
-20°C	4°C	Bu, normal tavsiye edilen ayardır.Bu ayar ortam sıcaklığı 30°C'nin altında ise; tavsiye edilir.
-22 veya -24°C	4°C	Bu ayarlar, ortam sıcaklığı 30°C'yi geçtiğinde tavsiye edilir.
Hızlı Dondur	4°C	Yiyeceklerinizi kısa zamanda dondurmak istediğinizde kullanın. İşlem bittiği zaman ürününüz önceki konumuna geri dönecektir.
-18°C veya daha soğuk	2°C	Ortamın sıcak olması veya kapının sık açılıp kapanmasından dolayı soğutucu bölmenizin yeterince soğuk olmadığını düşünüyorsanız, bu ayarları kullanın.

Derin Dondurucu Bilgileri

IEC 62552 standartlarına göre, her 100 litre dondurucu bölme hacmi için ürünün 25°C oda sıcaklığında 4,5 kg'lık gıda maddesini -18°C veya daha düşük sıcaklıklarda 24 saatte dondurabilmesini gerektirir.

Gıda maddelerinin uzun süre korunması ancak -18°C ve daha düşük sıcaklıkta mümkündür.

Gıda maddelerinin tazeliğini (derin dondurucuda -18°C ve daha düşük sıcaklıklarda) aylarca koruyabilirsiniz.

Dondurulacak gıda maddeleri daha önce dondurulan yiyeceklerin kısmen çözölmelerini önlemek için onlarla temas ettirilmemelidir.

Sebzelerin dondurulmuş halde depolama sürelerini uzatmak için haşlayın ve suyunu süzün. Süzdükten sonra hava geçirmeyen ambalajlara koyun ve dondurucuya yerleştirin. Muz, domates, marul, kereviz, haşlanmış yumurta, patates vb. besinler dondurulmaya uygun değildir. Bu besinlerin dondurulması durumunda sadece besin değeri ve yeme kaliteleri olumsuz etkilenecektir. İnsan sağlığını tehdit eden bir bozulma söz konusu değildir.

Gıdaların Yerleştirilmesi

Dondurucu bölme rafları:Et, balık, dondurma,sebze vb. gibi farklı donmuş gıdalar.

Soğutucu bölme rafları:Tencere, kapalı tabak ve kapalı kaplardaki gıdalar, yumurta (kapalı kapta)

Soğutucu bölme kapı rafları:Küçük ve paketlenmiş gıda ya da içecekler

Sebzelik:Sebzeler ve meyveler

Taze gıda bölmesi:Şarküteri ürünleri (kahvaltılık ürünler ,kısa sürede tüketilecek et ürünleri)

Et ve Balık			Hazırlama Şekli	En uzun depolama süresi (ay)
Et Ürünleri	Dana Eti	Biftek	2 cm kalınlıkta kesip aralarına folyo yerleştirerek veya streç ile sıkıca sararak	6-8
		Rosto	Et parçalarını buzdolabı poşeti ile ambalajlayarak veya streç ile sıkıca sararak	6-8
		Kuşbaşı	Ufak parçalar halinde	6-8
		Şnitzel, pirzola	Kesilmiş dilimlerin arasına folyo yerleştirerek veya streç ile tek tek sararak	6-8
	Koyun eti	Pirzola	Et parçalarının arasına folyo yerleştirerek veya streç ile tek tek sararak	4-8
		Rosto	Et parçalarını buzdolabı poşeti ile ambalajlayarak veya streç ile sıkıca sararak	4-8
		Kuşbaşı	Parçalanmış etleri buzdolabı poşeti ile ambalajlayarak veya streç ile sıkıca sararak	4-8
	Sığır eti	Rosto	Et parçalarını buzdolabı poşeti ile ambalajlayarak veya streç ile sıkıca sararak	8-12
		Biftek	2 cm kalınlıkta kesip aralarına folyo yerleştirerek veya streç ile sıkıca sararak	8-12
		Kuşbaşı	Ufak parçalar halinde	8-12
		Haşlama et	Ufak parçalar halinde buzdolabı poşeti ile ambalajlayarak	8-12
	Kıyma		Baharatlanmadan, yassı paketler halinde	1-3
	Sakatat (parça)		Parçalar halinde	1-3
	Sucuk - Salam		Zarlı olsa da paketlenmelidir	1-3
	Jambon		Kesilmiş dilimlerin arasına folyo yerleştirerek	2-3
Kümes ve av hayvanları	Tavuk ve Hindi		Folyo içine sararak	4-6
	Kaz		Folyo içine sararak (porsiyonlar 2.5 kg'dan fazla olmamalıdır)	4-6
	Ördek		Folyo içine sararak (porsiyonlar 2.5 kg'dan fazla olmamalıdır)	4-6
	Geyik, Tavşan, Karaca		Folyo içine sararak (porsiyonlar 2.5 kg'dan fazla olamamalı, ayrıca kemikleri ayrılmalıdır)	6-8

Et ve Balık		Hazırlama Şekli	En uzun depolama süresi (ay)
Balık ve deniz ürünleri	Tatlısu balıkları (Alabalık, Sazan, Turna, Yayın)	İçi ve pulları iyice temizlendikten sonra yıkanıp kurulanmalı, gerektiğinde kuyruk ve baş kısmı kesilmelidir.	2
	Yağsız balıklar (Levrek, Kalkan, Dilbalığı)		4-6
	Yağlı balıklar (Palamut, Uskumru, Lüfer, Tekir, Hamsi)		2-4
	Kabuklu deniz ürünleri	Temizlenmiş ve torbalar içinde	4-6
	Havyar	Ambalajında, alüminyum ya da plastik kap içinde	2-3

"Tabloda belirtilen saklama süreleri -18°C saklama sıcaklığı baz alınarak verilmiştir. "

Sebzeler ve Meyveler	Hazırlama Şekli	En uzun depolama süresi (ay)
Ayşekadın ve Sırık fasulye	Yıkayıp küçük parçalar halinde kestikten sonra 3 dk şok haşlama yaparak	10-13
Bezelye	Ayıklayıp yıkadıktan sonra 2 dk şok haşlama yaparak	10-12
Lahana	After cleaning, shock boil for 1-2 minutes.	6-8
Carrot	After cleaning and cutting into slices, shock boil for 3-4 minutes.	12
Pepper	After cutting the stem, splitting it in half and removing the seeds, shock boil it for 2-3 minutes.	8-10
Spinach	After washing and cleaning, shock boil for 2 minutes.	6-9
Leek	After chopping, flash boil for 5 minutes	6-8
Cauliflower	Separate the leaves, cut the core into pieces and then boil them in water with a little lemon for 3-5 minutes.	10-12
Aubergine	After washing, cut it into 2cm pieces and flash boil it for 4 minutes.	10-12
Courgette	After washing, cut into 2cm pieces and shock boil for 2-3 minutes.	8-10
Mushroom	Lightly sauté in oil and squeeze lemon over it.	2-3
Sweetcorn	By cleaning and packaging on the cob or in pieces	12
Apple and Pear	Peel it, slice it and boil it for 2-3 minutes.	8-10
Apricots and peaches	Cut in half and remove the seeds	4-6
Strawberry and Raspberry	By washing and sorting	8-12
Baked fruit	By adding 10% sugar in the container	12
Plum, Cherry, Sour Cherry	Washing and removing the stems	8-12

"The storage times specified in the table are based on a storage temperature of -18°C."

Dairy products	Preparation Method	Longest Storage Period (Months)	Storage conditions
Cheese (except white cheese)	By placing foil between slices	6-8	It can be left in its original package for short-term storage. For long-term storage, it should also be wrapped in aluminum or plastic foil.
butter, margarine	In its own packaging	6	In its own packaging or in plastic containers

"The storage times specified in the table are based on a storage temperature of -18°C."

"The amount of fresh food that can be frozen for a certain period of time is stated on the type label."

crisper

The crisper of the refrigerator is designed specifically to keep vegetables fresh without losing their moisture. For this purpose, cold air circulation is intensified throughout the crisper. Store your vegetables and fruits in this compartment. Do not place green leafy vegetables side by side with fruits to store them for a longer period.

Vegetable Technologies

Blue light

Fruits and vegetables stored in crispers illuminated with blue light preserve their vitamin C values by continuing to photosynthesize with the wavelength effect of blue light.

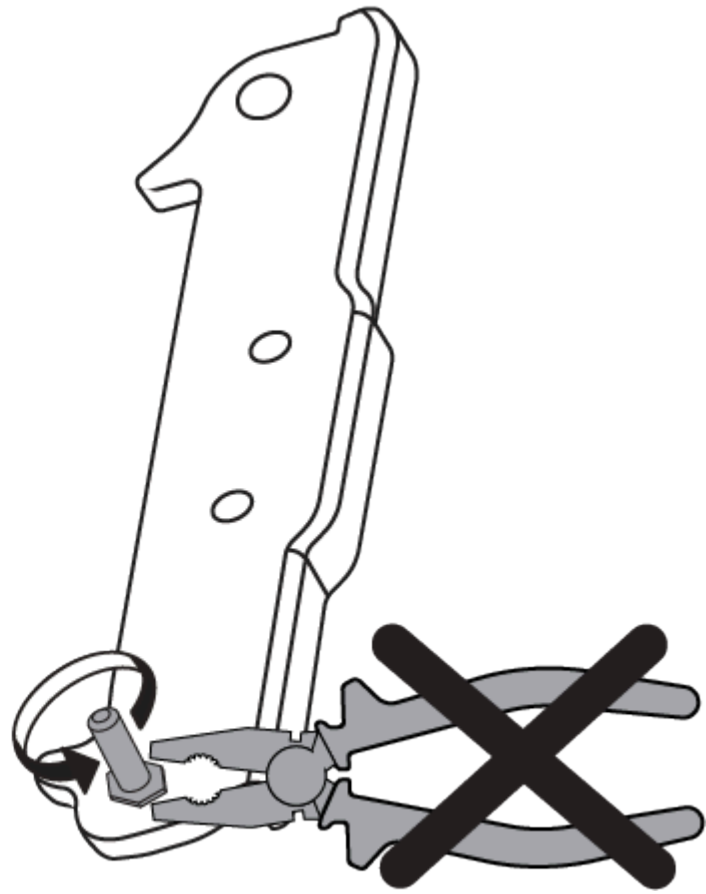
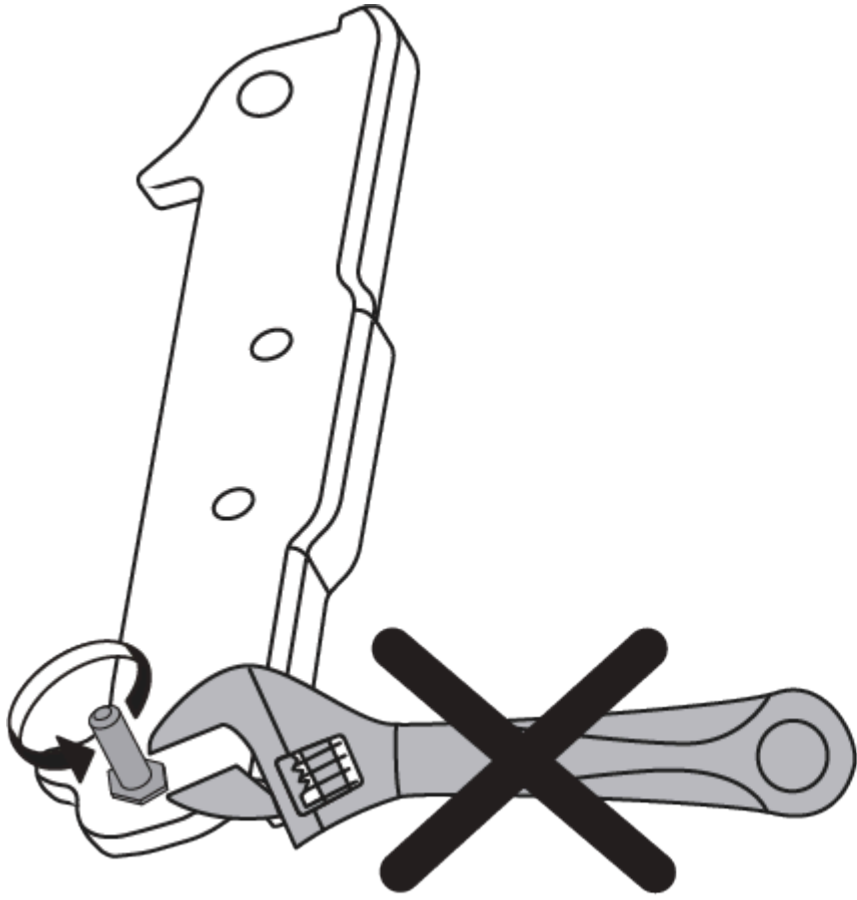
VitaminZone

Fruits and vegetables stored in crispers illuminated with VitaminZone technology preserve their vitamin values for a longer time thanks to the blue, green, red lights and dark cycles that simulate the day cycle.

If the refrigerator door is opened during the dark period of VitaminZone technology, your refrigerator will automatically detect this and illuminate your crisper with one of the blue, green or red lights for your easy use. The dark period will continue when you close the refrigerator door, representing the night period in the day cycle.

Change of Door Opening Direction

The opening direction of your refrigerator's door can be changed depending on where you use it. If you need this, be sure to contact the nearest Authorized Service.



Door Open Warning

Your refrigerator's door open alarm system may differ depending on the model.

Version 1;

If the product door remains open for a certain period of time (between 60 and 120 seconds), an audible warning will be heard, and depending on the product model, a visual warning (flashing lighting) may also be given. The warning sound will stop when you close the product door or press any button on the product screen, if any.

Version 2;

If the product door remains open for a certain period of time (between 60 and 120 seconds), the door open warning will be given. The door open warning will be given gradually. First, an audible warning will be given. If the product door is still not closed after 4 minutes, a visual warning (flashing lighting) will be activated. If any button is pressed on the product screen, the door open warning will be postponed for a certain period of time (between 60 and 120 seconds). Then, the process will start again. When the product door is closed, the door open warning will be canceled.

Lighting Lamp Replacement

When the Bulb/LED used for illumination in your refrigerator needs to be replaced .

The lamp(s) used in this device cannot be used for lighting purposes at home. The purpose of this lamp is to assist the user in placing refrigerator / freezer foods safely and comfortably.

AeroFresh

It is an air distribution system that provides homogeneous temperature distribution. Thanks to this air circulation, homogeneous temperature distribution is achieved within the fresh food storage compartment, while temperature fluctuations are kept at low levels. Air is not blown directly onto the food and helps reduce moisture loss. It preserves the freshness of foods stored in the fresh food compartment of the refrigerator. In this way, your food is stored at more stable temperatures and its contact with air is reduced. Foods are prevented from losing moisture and drying and shrinking, ensuring freshness for a longer period of time.

Fan

The fan is designed to ensure homogeneous distribution and circulation of cold air inside your refrigerator. The fan's operating time may vary depending on the features of your product.

In some products, the fan works only with the compressor, while in others, the control system determines when it will work according to the cooling need.

Maintenance and Cleaning

ANNOUNCEMENT



WARNING:

Read the “Safety Instructions” section first.

ANNOUNCEMENT



WARNING:

Before cleaning your refrigerator, unplug it or cut off the power from the fuse to which the product is connected.

- Do not use sharp or abrasive tools when cleaning the product. Do not use household cleaning products, soap, detergent, gas, gasoline, thinner, alcohol, polish, etc.
- The ventilation grille on the back of the product should be dusted (without opening the cover) at least once a year. Clean the product with a dry cloth.
- Be careful not to allow water to enter the lamp housing and other electrical parts.
- Clean the door with a damp cloth. To remove the door and body shelves, remove all contents. Remove the door shelves by lifting them up. After cleaning and drying, replace it by sliding it from top to bottom.
- Never use water or cleaning agents containing chlorine when cleaning the external surface of the product or chrome-plated parts. Chlorine causes rust on such metal surfaces.
- In order to prevent the pressure on the plastic part from being removed and deformed, do not use sharp, abrasive tools, soap, household cleaners, detergent, gas, gasoline, polish, etc. Do not use substances. For cleaning, use a soft cloth with warm water and dry.
- In Non-No Frost Products; Water droplets and frost up to a finger thickness form on the rear wall of the refrigerator compartment. Do not clean, never apply oil or similar substances.
- When cleaning the outer surface of the product, use only a slightly damp microfiber cloth. Sponges and other types of cleaning cloths may cause scratches.
- To clean the interior surfaces of the product, wash all removable parts with a mild solution of soap, water and baking soda. Wash and dry completely. Avoid getting water on the lights and control panel.

ANNOUNCEMENT



ATTENTION:

Do not use vinegar, rubbing alcohol or other alcohol-based cleaners on any interior surfaces.

Stainless Steel External Surfaces

Use a nonabrasive stainless steel cleaner and apply it with a soft, lint-free cloth. To polish, gently wipe the surface with a microfiber cloth dampened with water and use a dry polishing chamois. Always follow the grain of stainless steel.

Preventing Bad Odors

No substances that will cause odor are used in the production of your product. However, odor may occur due to improper food storage and not cleaning the inner surface of the product properly.

- To prevent this problem, clean it with carbonated water every 15 days.
- Store food in closed containers as microorganisms spread from foods stored openly will cause bad odors.
- Never store expired or spoiled foods in your refrigerator.

ANNOUNCEMENT



Tea is one of the best known odorants. Place the tea pulp you brewed in an open container inside the product and remove it after 12 hours at the latest. If you keep the tea pulp in the product for more than 12 hours, it can become the source of the odor as it will collect the organisms that cause the odor.

Protection of Plastic Surfaces

If oil is spilled on plastic surfaces, clean it immediately with warm water as the oil may damage the surface.

Troubleshooting

The refrigerator does not work.

- The plug is not fully seated in the socket. >>> Insert the plug into the socket until it fits fully.
- The fuse of the socket to which the product is connected or the main fuse has blown. >>> Check the fuse.

Sweating on the side wall of the refrigerator compartment (MULTI ZONE, COOL CONTROL and FLEXI ZONE).

- The door was opened and closed too frequently. >>> Be careful not to open and close the product door too frequently.
- The environment is very humid. >>> Do not install the product in very humid environments.
- Foods containing liquid may be stored in open containers. >>> Store foods containing liquid in closed containers.
- The product door is left open. >>> Do not keep the product door open for a long time.
- The thermostat is set to a too cold setting. >>> Adjust the thermostat to the appropriate setting.

Compressor is not working.

- In case of sudden power outage or plug-in and plug-out, the compressor protective thermal trips because the gas pressure in the product cooling system has not yet been balanced. The product will start operating after approximately 6 minutes.
- It is in the defrosting phase. >>> This is normal for a product that defrosts fully automatically. The defrost cycle occurs periodically.
- The product is not plugged into the socket. >>> Make sure the plug is plugged into the socket.
- Temperature settings are not set correctly. >>> Select the appropriate temperature setting.
- The electricity has been cut. >>> When power is restored, the product will continue to operate normally.

The operating noise increases while the refrigerator is operating.

- The operating performance of the product may change depending on the change in ambient temperature. This is normal and not a malfunction.

The refrigerator runs too often or for too long.

- The new product may be larger than the old one. Larger products work longer.
- The room temperature may be high. >>> It is normal for it to work longer in hot environments.
- The product may have been plugged in recently or new food may have been added. >>> When the product is plugged in recently or new food is added, it takes longer for the product to reach the set temperature. This is normal.
- Large amounts of hot food may have been placed in the product recently. >>> Do not place hot food in the product.
- Doors were opened frequently or remained open for long periods of time. >>> Hot air entering causes the product to work longer. Do not open the doors too often.
- The freezer or refrigerator door may be ajar. >>> Check if the doors are completely closed.
- The product is set to a very low temperature. >>> Set the temperature of the product to a higher degree and wait for it to reach this temperature.

- Soğutucu ya da dondurucu kapı contası kirlenmiş, eskimiş, kırılmış ya da tam oturmamış olabilir. >>> Contayı temizleyin ya da değiştirin. Hasarlı / kopuk kapı contası ürünün mevcut sıcaklığı korumak için daha uzun süre çalışmasına neden olur.

Dondurucu sıcaklığı çok düşük ama soğutucu sıcaklığı yeterli.

- Dondurucu bölme sıcaklığı çok düşük bir değere ayarlanmıştır. >>> Dondurucu bölme sıcaklığını daha yüksek bir dereceye ayarlayıp kontrol edin.

Soğutucu sıcaklığı çok düşük ama dondurucu sıcaklığı yeterli.

- Soğutucu bölme sıcaklığı çok düşük bir değere ayarlanmıştır. >>> Soğutucu bölme sıcaklığını daha yüksek bir dereceye ayarlayıp kontrol edin.

Soğutucu bölme çekmecelerinde saklanan yiyecekler donuyor.

- Soğutucu bölme sıcaklığı çok düşük bir değere ayarlanmıştır. >>> Soğutucu bölme sıcaklığını daha yüksek bir değere ayarlayıp kontrol edin.

Soğutucu ya da dondurucudaki sıcaklık çok yüksek.

- Soğutucu bölme sıcaklığı çok yüksek bir değere ayarlanmış olabilir. >>> Soğutucu bölme sıcaklık ayarının dondurucu bölme sıcaklığı üzerinde etkisi vardır. Soğutucu ya da dondurucu bölme sıcaklığını değiştirerek ilgili bölmelerin sıcaklığı yeterli seviyeye gelene kadar bekleyin.
- Kapılar sık açılmış ya da uzun süre açık kalmıştır. >>> Kapıları çok sık açmayın.
- Kapı aralık olabilir. >>> Kapıyı tamamen kapatın.
- Ürünün fişi daha yeni takılmış ya da yeni yiyecek konulmuş olabilir. >>> Bu normaldir. Fiş yeni takıldığında ya da yeni yiyecek konulduğunda ürünün ayarlanan sıcaklığa ulaşması normalden daha uzun zaman alır.
- Ürüne yakın zamanda fazla miktarlarda sıcak yemek konmuş olabilir. >>> Ürüne sıcak yemek koymayın.

Sarsılma ya da gürültü.

- Zemin düz veya dayanıklı değildir. >>> Ürün yavaşça hareket ettirildiğinde sallanıyorsa ayaklarını ayarlayarak ürünü dengeleyin. Ayrıca zeminin ürünü taşıyabilecek kadar dayanıklı olmasına dikkat edin.
- Ürünün üzerine konan eşyalar gürültü yapıyor olabilir. >>> Ürünün üzerinde bulunan eşyaları kaldırın.
- Üründen sıvı akması, püskürmesi vb. sesler geliyor.
- Ürünün çalışma prensipleri gereği sıvı ve gaz akışları gerçekleşmektedir. >>> Bu normaldir ve bir arıza değildir.

Üründen rüzgar sesi geliyor.

- Ürünün soğutma işlemini gerçekleştirebilmesi için fan kullanılmaktadır. Bu normaldir ve bir arıza değildir.

Ürünün iç duvarlarında terleme oluyor.

- Havanın sıcak ve nemli olması buzlanmayı ve yoğunlaşmayı artırır. Bu normaldir ve bir arıza değildir.
- Kapılar sık açılmış ya da uzun süre açık kalmıştır. >>> Kapıları çok sık açmayın, açıksa kapatın.
- Kapı aralık olabilir. >>> Kapıyı tamamen kapatın.

Ürünün dışında ya da kapıların arasında terleme oluşuyor.

- Hava nemli olabilir, nemli havalarda bu gayet normaldir. >>> Nem azaldığında yoğunlaşma kaybolur.

Ürünün içi kötü kokuyor.

- Düzenli temizlik yapılmamıştır. >>> Ürünün içini sünger, ılık su veya karbonatlı suyla düzenli olarak temizleyin.
- Some containers or packaging materials may cause odor. >>> Use odor-free containers or packaging materials.
- Food was placed in the product in open containers. >>> Store food in closed containers. Microorganisms spread from food stored open can cause bad odors.
- Remove expired and spoiled foods from the product.

The door does not close.

- Food packages may be blocking the door from closing. >>> Move the packages that are blocking the doors.
- The product may not be standing completely upright on the floor. >>> Balance the product by adjusting its feet.
- The ground is not flat or solid. >>> Make sure the ground is flat and strong enough to support the product.

The vegetable bins are jammed.

- Food may be touching the top of the drawer. >>> Organize the food in the drawer.

There is heat on the product surface.

- While your product is operating, high temperatures may be observed between the two doors, on the side panels and in the rear grill area. This is normal and does not require any service.

The fan continues to run when the door is opened.

- The fan may continue to run when the freezer door is opened.