

Please read this guide first!

Our valued customer,

Please read this manual before using the product.

Thank you for choosing an product. We want your product, which is produced with high quality and technology, to provide youwith the best performance. For this, read this manual and the other documents provided carefully before using the product.

Take into account all information and warnings specified in the user manual. In this way, you can protect yourself and your product against possible dangers. Keep the user manual. If you give the product to someone else, give the user manual along with it.

The following symbols appear in the user manual and on the product:

ANNOUNCEMENT



Hazard that could result in death or injury.

ANNOUNCEMENT



Risk of electric shock!

WARNING



Important information or useful tips for use.

ATTENTION



Read the user manual.

DANGER



Combustible material, warning of fire hazard.

DANGER



Danger that may result in burns due to contact with hot surfaces.

Safety Instructions

- This section contains safety instructions that will help prevent personal injury or property damage.
- Our company cannot be held responsible for any damages that may occur if these instructions are not followed.

ANNOUNCEMENT



Always have installation and repairs carried out by the manufacturer or an authorized service.

ANNOUNCEMENT



Use only original spare parts and accessories.

ANNOUNCEMENT



Do not repair or replace any part of the product unless expressly stated in the user manual.

ANNOUNCEMENT



Do not make technical changes to the product.

Additional Information

- [Purpose of usage](#)
- [Child, Vulnerable Person and Pet Safety.](#)
- [Electrical Safety.](#)
- [Transportation Security.](#)
- [Installation Security.](#)
- [Usage Safety.](#)
- [Food Storage Safety.](#)
- [Maintenance and Cleaning Safety.](#)
- [Disposal of the Old Product](#)

Purpose of usage

- This product is not suitable for commercial use and should not be used for purposes other than its intended use.
- This product is designed to be used indoors, at home and similar places.

For example;

In staff kitchens of stores, offices and other work environments,

In farmhouses,

In the environments used by customers of hotels, motels and other accommodation facilities,

In hostel type environments,

In food service and similar non-retail applications.

- The product should not be used on a boat, in a caravan, or in open or closed outdoor spaces such as balconies or terraces.
Exposing the product to rain, snow, sun and wind may create a fire risk.

Child, Vulnerable Person and Pet Safety

- This product can be used by children aged 8 years and above and persons whose physical, sensory or mental capabilities are not fully developed or who lack experience and knowledge, as long as they are supervised or trained on the safe use of the product and its hazards.
- Children between the ages of 3 and 8 are allowed to load and unload the refrigerator.
- Children and pets should not play with, climb on, or climb into the product.
- Children and pets should be kept away from the cabin bottom (compressor) area where the electrical parts are located.
- Cleaning and user maintenance operations should not be carried out by children unless they are supervised by someone.
- Keep packaging materials away from children. There is a risk of injury and suffocation.

Electrical Safety

- The product should not be plugged in during installation, maintenance, cleaning, repair and transportation.

If the power cable is damaged, it must be replaced by an authorized service in order to prevent possible hazards.

- Do not squeeze the power cord under or behind the product. Do not place a heavy object on the power cord. The power cord should not be excessively bent, crushed or come into contact with any heat source.
- Do not use an extension cord, multiple socket or adapter to operate the product.
- Portable multiple socket outlets or portable power supplies may overheat and cause a fire. Therefore, do not place multiple socket outlets or portable power supplies behind or near the product.
- Do not plug the product into a loose or damaged socket. Such connections may overheat and cause a fire.
- The plug must be in an easily accessible place. If this is not possible, there must be a mechanism (fuse, switch, switch, etc.) on the electrical installation to which the product is connected, that complies with electrical regulations and separates all poles from the network.
- The product should not be operated with an external switching device such as a timer or remote control system.
- Do not use the product when your feet are bare or your body is wet.
- Do not touch the plug with wet hands.
- When unplugging, pull the plug, not the cable.

Transportation Security

- Unplug the product before moving it.
- The product is heavy, do not carry it alone. If the product falls on you, it may cause injury. Do not hit or drop the product while carrying it.
- When carrying the product, always close its doors and do not hold it by the doors.
- Be careful not to damage the cooling system and pipes during transportation of the product.

Installation Security

- To make the product ready for use, make sure that the electrical installation and water installation are suitable by looking at the information in the user manual. If the installation is not suitable, call a licensed electrician and plumber and have the necessary arrangements made. Otherwise, electric shock, fire, problems with the product or injury may occur.
- This product is designed for use at altitudes up to 2000 meters above sea level.
- Keep children away from the installation area.
- Check if there is any damage on the product before installation. If the product is damaged, do not install it.!
- Be sure to use personal protective equipment (gloves, etc.) when performing product installation, maintenance and repair. Risk of injury!
- Place the product on a clean, flat and hard surface and balance it with the help of adjustable feet (by turning the front feet to the right or left). Otherwise, the refrigerator may tip over and cause injury.
- The place where the product will be installed must be dry and ventilated. There should be no carpets, rugs or similar covers under the product. There may be a risk of fire due to insufficient ventilation!
- Do not block the front or top of the ventilation holes. Otherwise, energy consumption will increase and damage to your product may occur.
- When placing the product, make sure that the supply cable is not damaged or pinched.
- The product should not be connected to supply systems or power sources that may cause sudden voltage changes (e.g. portable solar power supply). Otherwise, your product may be damaged due to sudden voltage changes!
- The more refrigerant a refrigerator contains, the larger the location it should be installed in. In very small spaces, if there is a gas leak in the cooling system, a flammable gas-air mixture may form. The volume of space required for every 8 grams of refrigerant gas is at least 1 m³. The amount of refrigerant gas in your product is written on the Type Label.
- The product should never be placed in such a way that the electrical cables, metal hose of the gas stove, metal gas or water pipes come into contact with the rear wall of the product (or the condenser).
- The location where the product is installed should not be exposed to direct sunlight and should not be near a heat source such as a stove, radiator, etc. If the installation of the product near a heat source cannot be avoided, a suitable insulation board should be used or the minimum distance to the heat source should be as follows:
 - At least 30 cm away from heat sources such as stove, oven, heating unit and stove,
 - At least 5 cm away from electric ovens.
- Your product is a protection class I device.
- Connect the product to a grounded socket that complies with the Voltage, Current and Frequency values specified on the product type label. The socket must have a fuse of 10A – 16A. Our company will not be responsible for any damage that may occur if the product is used without grounding and electrical connection in accordance with local and national regulations.
- The product's power plug should not be plugged into the socket during installation. Otherwise there is a risk of electric shock and injury!
- Do not plug the product into sockets that are loose, disconnected, broken, dirty, oily or at risk of contact with water. Such connections may cause overheating and fire.
- Place the product power cable and hoses (if any) in a way that does not pose a tripping hazard.
- Moisture and liquid penetration into live parts or the power cord may cause a short circuit. For this reason, do not use the device in damp or splashing areas (e.g. garage, laundry room).
- Never connect your refrigerator to electricity saving devices. Such systems are harmful to the product.
- There is a danger of contact with electrical parts when the electronic card cover and compressor rear cover (if included in the product) are removed. Do not disassemble the product's card cover or compressor rear cover (if present on the product). There is a risk of electric shock!

Usage Safety

- Never use chemical solvents on the product. These substances carry the risk of explosion.
 - In case of a malfunction in the product, unplug the product and do not operate it until it is repaired by the authorized service. There is a risk of electric shock!
 - Do not place a flame source (e.g. candle, cigarette) on or near the product.
 - Do not climb onto the product. Risk of falling and injury!
 - Do not damage the cooling system pipes using cutting or piercing tools. If the gas pipes, pipe extensions or surface coatings are punctured, the refrigerant that will spray out will cause skin irritation and eye injuries.
 - Do not place or use electrical appliances in the refrigerator/freezer unless recommended by the manufacturer.
 - Be careful not to trap any part of your hands or body in the moving parts inside the product. Be careful not to get your fingers caught between the door and the cabinet. If there are children around, be careful when opening and closing the door.
 - Never put ice creams, ice cubes and frozen foods into your mouth immediately after taking them out of the freezer. There is a risk of frostbite!
 - Do not touch the inner walls of the freezer, metal parts or products stored in the freezer with wet hands. There is a risk of frostbite!
 - Do not place cans and bottles containing carbonated drinks or liquids that can freeze in the freezer compartment. The cans or bottles may explode. There is a risk of injury and material damage!
 - Do not use or place temperature-sensitive substances such as flammable sprays, flammable objects, dry ice or other chemicals near the refrigerator. There is a risk of burning and explosion!
 - Do not store explosive materials, such as aerosol cans containing flammable materials, inside your product.
 - Do not place containers containing liquid on the product with the top open. Splashing water on an electrical part may cause electric shock or fire hazard.
 - Do not store glass containers containing liquids in the freezer compartment due to the risk of breakage.
 - This product is not suitable for the storage and cooling of medicines, blood plasma, laboratory preparations or similar substances and products subject to the Medicinal Products Directive.
 - If the product is used contrary to its intended purpose, it may cause damage or deterioration of the products stored inside.
 - If your refrigerator has Blue light, do not look at this light with optical instruments. Do not look directly at the UV LED lamp for a long time. Ultraviolet rays can cause eye strain.
 - Do not fill the product beyond its capacity. Injuries or damage may occur if the contents of the refrigerator fall when the door is opened. Similar problems may occur when any object is placed on the product.
 - Be sure to remove any ice or water that may have fallen on the floor to avoid injury.
 - Only move the shelves/bottle shelves on your refrigerator door when the shelves are empty. There is a risk of injury!
 - Do not place anything on the product that could fall/topple over. When opening and closing the door, objects may fall and cause injury and/or property damage.
 - Do not strike or apply excessive force to glass surfaces. Breaking the glass may result in personal injury and/or property damage.
 - The cooling system in your product contains R600a gas. The type of gas used in the product is stated on the type label. This gas is flammable. Therefore, be careful not to damage the cooling system and pipes during use. In case the pipes are damaged;
1. Do not touch the product or the power cord.
 2. Keep away from potential fire sources that could cause the product to catch fire.
 3. Ventilate the environment where the product is located. Do not use a fan.

If the product is damaged and you observe gas escaping, please stay away from the gas. If the gas comes into contact with your skin, it may cause frostbite.

Before throwing away old and unusable products:

1. Unplug the power plug and unplug it.
2. Cut the power cord and remove it from the device along with the plug.
3. To make it difficult for children to get inside the appliance, do not remove the shelves and drawers.
4. Remove the doors.

5. Keep the product in a way that it cannot tip over.
 6. Do not allow children to play with the worn product.
- Never dispose of the product by throwing it into fire. There is a risk of explosion.
 - If there is a lock on the door of the product, the key should be kept out of reach of children.

Food Storage Safety

To avoid food spoilage, please pay attention to the following warnings:

- Leaving the doors open for a long time may cause the temperature inside the product to rise.
- Clean food contact and accessible drain systems regularly.
- Clean water tanks that have not been used for 48 hours and mains-fed water systems that have not been used for more than 5 days.
- Store raw meat and fish products in appropriate compartments in the product so that they do not drip or come into contact with other foods.
- Two-star freezer compartments are used for storing pre-filled foods, making and storing ice and ice cream.
- One, two and three star compartments are not suitable for freezing fresh food.
- If the refrigerating product has been left empty for a long time, turn off the product, defrost, clean and dry the product to protect the body of the product.

Maintenance and Cleaning Safety

- Before cleaning or maintaining the refrigerator, unplug it and cut off the power from the fuse.
- If you are going to move the product for cleaning purposes, do not pull it by hanging on the door handle. If the handle is pulled too hard, it may cause injury.
- Do not put your hands, feet or metal objects under or behind the refrigerator. It may cause personal injury due to pinching or any sharp edges.
- Do not clean by spraying or pouring water on or inside the product. There is a risk of electric shock and fire.
- When cleaning the product, do not use sharp and abrasive tools or household cleaning products, detergent, gas, gasoline, thinner, alcohol, polish, etc. Do not use substances. Use only cleaning and care products inside the product that are not harmful to food.
- Never use steam or steam-assisted cleaning materials to clean or defrost the product. Steam may come into contact with electrically live areas of your refrigerator, causing a short circuit or electric shock.
- Do not use any mechanical tools or other devices other than those recommended by the manufacturer to speed up the defrosting process.
- Be careful not to allow water to enter the product's ventilation holes, electronic circuits or lighting. Otherwise, there is a risk of fire or electric shock.
- Use a clean, dry cloth to wipe any foreign matter or dust from the plug terminals. When cleaning the plug, do not use a wet or damp cloth. Otherwise, there is a risk of fire or electric shock.

Disposal of the Old Product

Follow the instructions below when disposing of your old product;

- To prevent children from accidentally locking themselves inside the product, if the product has a door lock; disable the lock.
- Coolant splashes will damage the eyes. Do not damage any part of the cooling system when disposing of the product.
- Compressor oil can be fatal if swallowed or enters the respiratory tract.
- The cooling system in your product contains R600a gas as stated on the type label. This gas is flammable. Never destroy the product by throwing it into a fire. There is danger of explosion!
- C-Pentane is used as a blowing agent in insulation foam and is a flammable substance. Never destroy the product by throwing it into a fire.

Environmental Instructions

Additional Information

[Compliance with WEEE Regulation and Disposal of Waste Product](#)

[Packaging Information](#)

Compliance with WEEE Regulation and Disposal of Waste Product

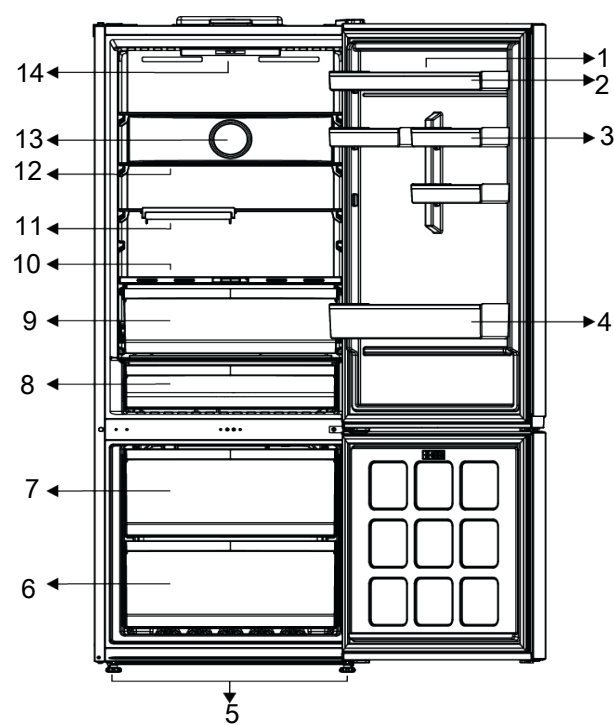
This product does not contain harmful and prohibited substances specified in the "Regulation on the Control of Waste Electrical and Electronic Equipment" published by the Ministry of Environment and Urbanization of the Republic of Turkey.

DANGER



This product is manufactured with high quality parts and materials that can be recycled and reused. Therefore, do not dispose of the product with household or other waste at the end of its service life. Take it to a collection point for the recycling of electrical and electronic devices. Ask your local authorities about these collection points. Help protect the environment and natural resources by recycling used products.

your refrigerator



one	*Adjustable door shelves	2	Ovarian
3	*Small door shelves	4	*Bottle rack
5	Adjustable feet	6	Freezer compartment drawer
7	Freezer container	8	*Cold storage drawer
9	Vegetable Basket	10	* Humidity controlled vegetable rack
11th	*Folding wine rack	12	*Adjustable glass shelf
13	Fan	14	Lighting

***Optional:** The figures in this user manual are schematic and may not be exactly compatible with your product. If the product you purchased does not have the relevant parts, it is valid for other models.

Setup

WARNING



Read the "Safety Instructions" section first!

Additional Information

[Right Place for Installation](#)

[Electrical connection](#)

[Installing Plastic Wedges](#)

[Adjusting the Feet](#)

[Hot Surface Warning](#)

Right Place for Installation

To make the product ready for use, make sure that the electrical and plumbing systems are suitable by referring to the information in the user manual. If not, call a licensed electrician and plumber to make the necessary arrangements.

WARNING



WARNING:

The manufacturer is not responsible for any damages that may be caused by operations carried out by unauthorized persons.

WARNING



WARNING:

The product must not be plugged into a power outlet during installation. Otherwise, there is a risk of death or serious injury!

WARNING



WARNING:

If the doorway of the room where the product will be placed is too narrow for the product to pass through, remove the door of the room and turn the product sideways to pass through .

- Place the product on a flat surface to avoid shocks.
- Install the product at least 30 cm away from heat sources such as hobs, radiators and stoves, and at least 5 cm away from electric ovens.
- Do not expose the product to direct sunlight and do not keep it in a damp place.
- In order for the product to operate efficiently, there must be adequate air circulation around it. If the product is to be placed in a recessed area in the wall, make sure there is at least a 5 cm gap between it and the ceiling and side walls.
- Check that the rear wall distance protection piece (if supplied) with the product is in place.
- If there is no part, if it is lost or falls, position the product so that there is a gap of at least 5 cm between the back surface of the product and the room wall. The space at the back is important for the product to work efficiently.

Electrical connection

WARNING



Do not connect with extension cords or multiple sockets.

WARNING



Damaged power cable must be replaced by Authorized Service.

ANNOUNCEMENT



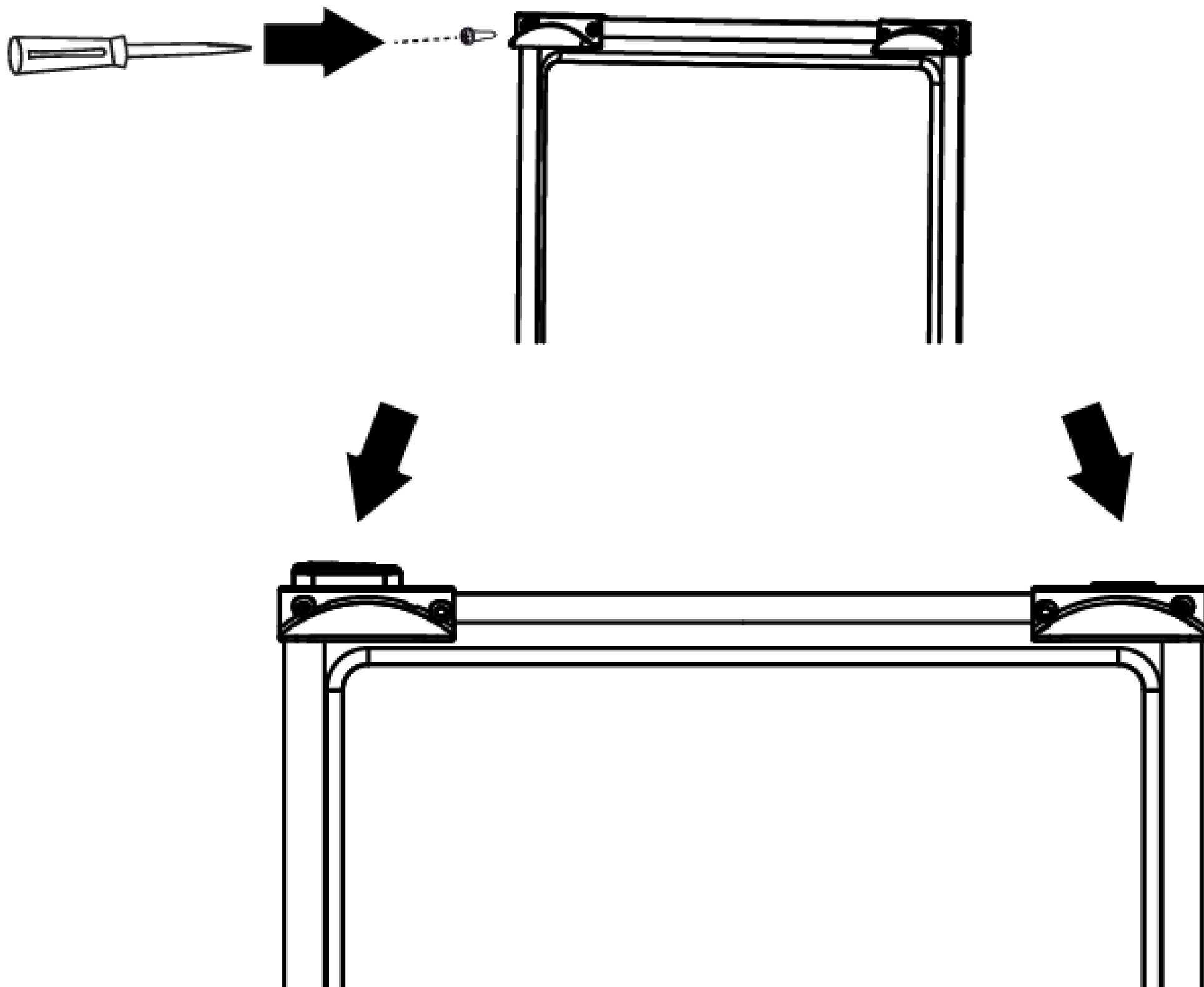
If two coolers are placed side by side, there should be at least 4 cm of space between them.

- Our company will not be responsible for any damages that may occur if the product is used without grounding and electrical connection in accordance with national regulations.
- The power cord plug must be easily accessible after installation.
- Do not use an extension cable or wireless multiple group socket between your refrigerator and the wall socket.

Installing Plastic Wedges

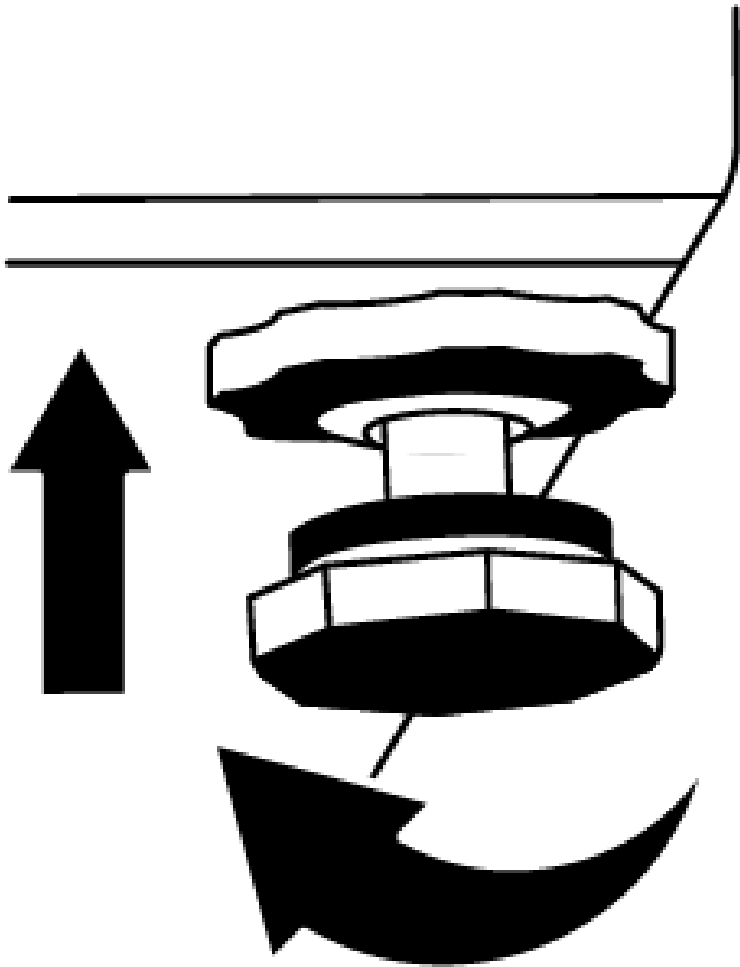
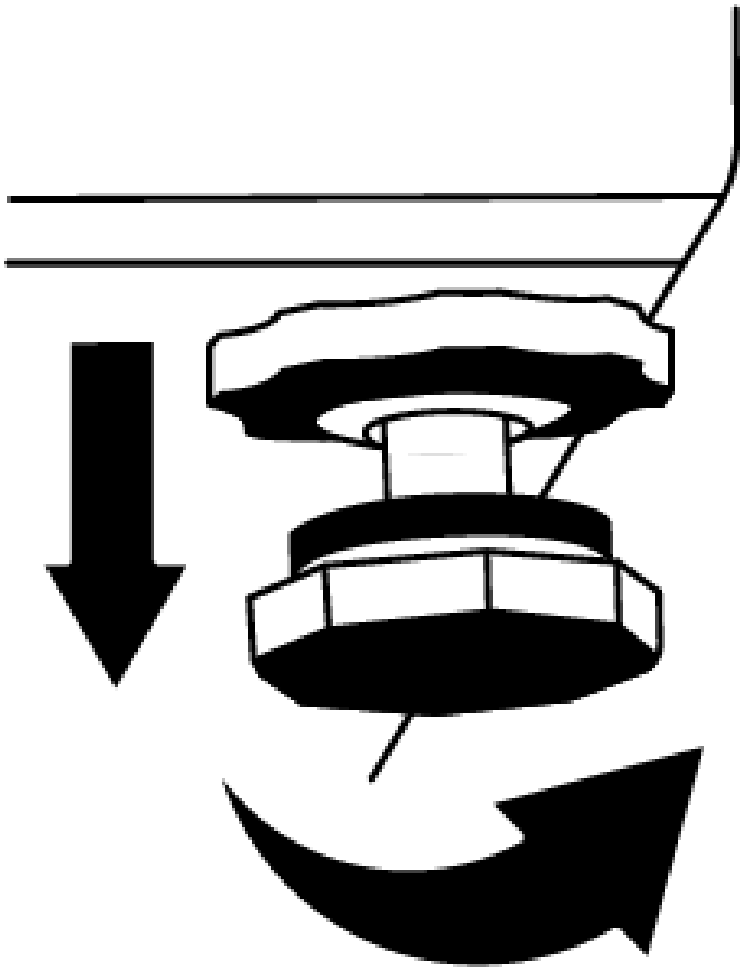
Plastic wedges included in the product are used to maintain the distance between the product and the wall to ensure air circulation.

1. To install the wedges, remove the screws on the product and use the screws provided with the plastic wedges.
2. Attach 2 plastic wedges to the rear ventilation cover as shown in the figure.



Adjusting the Feet

If the product is unstable where you place it, adjust it by turning the front adjustment feet to the right or left.



Hot Surface Warning

The side walls of your product are equipped with refrigerant pipes to improve the cooling system. High temperature fluid may flow through these surfaces and cause hot surfaces on the side walls. This is a normal situation and does not require any service. Be careful when touching these areas.

Preliminary

WARNING



Read the “Safety Instructions” section first!

Additional Information

[What to Do to Save Energy.](#)

[First Use](#)

[Climate Class and Meanings](#)

What to Do to Save Energy

WARNING



Connecting the product to electronic energy saving systems is dangerous as it may damage the product.

- This cooling appliance is not designed to be used as a built-in appliance.
- Do not keep the doors of your refrigerator open for a long time.
- Do not put hot food or drinks in your refrigerator.
- Do not overfill the refrigerator, cooling capacity will decrease when airflow inside is blocked.
- Since hot and humid air will not enter directly when the doors of your product are not opened, your product optimizes itself under conditions sufficient to protect your food. Under these conditions, the compressor, fan, heater, defrost, lighting, indicator and other components and functions on the product operate in a way that consumes the least energy according to needs.
- If there is more than one option, glass shelves should be placed so that they do not block the air outlets on the back wall, preferably the air outlets are below the glass shelf. This combination can help improve air distribution and energy efficiency.
- It is highly recommended to use the bottom drawer when loading.
- Depending on the features of your product, thawing frozen food in the refrigerator compartment will both save energy and preserve the quality of the food.
- In order to load the maximum amount of food into the freezer compartment of your refrigerator, the top drawers should be removed and loaded onto wire/glass shelves.
- Food should be stored using the drawers in the cooling compartment to save energy and protect the food in a better environment.
- Direct contact of food packages with the temperature sensor in the freezer compartment should be prevented.

First Use

Before you start using your refrigerator, make sure that the preparations have been made in accordance with the instructions in the “Safety and Environmental Instructions” and “Installation” sections.

- Wait at least 2 hours before operating the product for cooling to be fully effective.
- Let the product run empty for 6 hours without any food and do not open the door unless absolutely necessary.
- It is normal for the door/body shelves and the glassware placed inside the product to condense as a result of thermal changes caused by opening and closing the product door during use.

ANNOUNCEMENT



You will hear a sound when the compressor starts working. It is normal for the product to make noise even if the compressor is not working because liquid and gas may be trapped in the cooling system.

ANNOUNCEMENT



It is normal for the front edges of the refrigerator to be warm. These areas are designed to be heated to prevent condensation.

ANNOUNCEMENT



In some models, the display panel automatically turns off 1 minute after the door is closed. It will be reactivated when the door is opened or any button is pressed.

Climate Class and Meanings

Please refer to the Climate Class on the rating plate of your device. Depending on the Climate Class, one of the following information applies to your device.

- **SN:** Long-Term Temperate Climate: This cooling device is designed for use in ambient temperatures between 10°C and 32°C.
- **N:** Temperate Climate: This refrigerator is designed for use in ambient temperatures between 16°C and 32°C.
- **ST:** Subtropical Climate: This cooling device is designed for use in ambient temperatures between 16°C and 38°C.
- **T:** Tropical Climate: This cooling device is designed for use in ambient temperatures between 16°C and 43°C.

Operating the Product

ANNOUNCEMENT



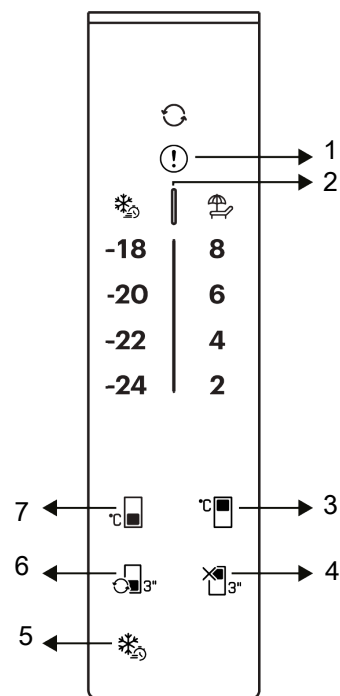
Read the "Safety Instructions" section first!

- Do not use any mechanical tools or other devices other than those recommended by the manufacturer to speed up the defrosting process.
- Never use parts of your refrigerator, such as doors and drawers, as support or stepping stones. This may cause the product to topple over or damage its parts.
- The product should only be used for food storage.
- If you will be away from home for a long time (for example, on vacation) and will not use the Icemaker or water dispenser, turn off the water valve. Otherwise, water leakage may occur.

Turning off the product

- If you are not going to use the product for a long time, unplug the product.
- Remove food to avoid odor,
- Wait for the ice to melt, clean the interior and let it dry, leave the doors open to prevent damage to the interior body plastics.

Control Panel of the product



one	Error Status Indicator	2	Energy Saving (Screen Off) Indicator
3	Fridge Compartment Temperature Adjustment Button	4	*Fridge Compartment Closing (Holiday) Function Button
5	*Fast Freezing Button	6	*Cabin Conversion Key
7	Freezer Compartment Temperature Setting Key		

ANNOUNCEMENT



Read the “Safety Instructions” section first.

***Optional:** The functions shown are optional, the functions on the display panel of your product may differ in shape and location.

1.Error Status Indicator❗

This indicator will be active when the refrigerator cannot cool sufficiently or when a sensor error occurs. When you load hot foods into the freezer compartment or leave the door open for a long time, the exclamation mark may light up for a while. This is not a malfunction, this warning will disappear when the foods cool down or when any button is pressed.

2.Energy Saving (Screen Off) Indicator

When the doors of the product are not opened or closed, energy saving is automatically activated and the energy saving symbol is illuminated. When the energy saving function is activated, all icons on the screen go out except the energy saving icon. If any button is pressed or the door is opened while the energy saving function is active, the energy saving function will be exited and the icons on the screen will return to normal. The energy saving function is an active function from the factory and cannot be canceled.

3.Fridge Compartment Temperature Setting Button°C

Temperature adjustment is made for the refrigerator compartment. When the button is pressed, the refrigerator compartment temperature can be adjusted to 8°C, 6°C, 4°C, 2°C.

4.*Fridge Compartment Closing (Holiday) Function Button

To activate the holiday function, press the button for 3 seconds. The holiday mode is activated and the holiday icon lights up. The refrigerator compartment does not perform active cooling. When this function is activated, it is not appropriate to keep your food in the refrigerator compartment. Other compartments continue to cool according to their set temperatures. To cancel this function, press the button again for 3 seconds.

5.*Fast Freezing Button

When the fast freeze button is pressed, the fast freeze icon lights up and the fast freeze function is activated. The freezer compartment temperature is set to -27 °C. The button must be pressed again to cancel the function. The fast freeze function automatically cancels itself after a certain period of time. If you want to freeze a large amount of fresh food, press the fast freeze button before placing the food in the freezer compartment.

6.*Cabin Conversion Key

When the cabin conversion button is pressed for 3 seconds, the freezer compartment will switch to cooler, closed and It cycles through freezer modes.

When it works as a refrigerator compartment, the temperature of the compartment is set at 4 °C. In off mode, “- -” will be displayed on the cabin temperature display.

7.Freezer Compartment Temperature Setting Button

Temperature setting is made for the freezer compartment. When the button is pressed, the freezer compartment temperature can be set to -18°C, -20°C, -22°C, -24 °C.

Using the Product

ANNOUNCEMENT



Read the “Safety Instructions” section first!

Additional Information

[Storing Food in the Refrigerator Compartment](#)

[Changing the Lighting Lamp](#)

[Door Open Alert](#)

[Change of Door Opening Direction](#)

Storing Food in the Refrigerator Compartment

Storing Food in the Refrigerator Compartment

- If the compartment door is opened and closed frequently and left open for a long time, compartment temperatures rise significantly, which may reduce the life of the food and cause the food to spoil.
- To avoid any change in odor or taste, foods should be stored in closed containers.
- Do not store too much food in your refrigerator. To achieve better and more uniform cooling, place the food at intervals so that cold air can circulate between them.
- Allow air flow by leaving space between the food and the interior wall. If you place food against the back wall, it may freeze.
- Bring hot cooked meals to room temperature before placing them in the refrigerator. Then, you can place the warmed food on the lower shelves of your refrigerator. Do not place warm dishes near perishable foods.
- Be especially careful not to mix frozen foods with fresh foods.
- Defrost your frozen food in the fresh food compartment. In this way, you can cool the fresh food compartment by using frozen food and save energy.
- Storing unripe tropical fruits (mango, melon, papaya, banana, pineapple) in the refrigerator can speed up the ripening process. This is not recommended as it will mean shorter storage time.
- You should store onions, garlic, ginger and other root vegetables in dark, cool room conditions, not in the refrigerator.
- If you notice that food has spoiled in the refrigerator, throw away that food and clean the accessories it came into contact with.
- To quickly cool down dishes cooked in large pots, such as soups and stews, you can divide them into shallow containers and put them in the refrigerator.
- Do not place unpackaged foods near eggs.
- Keep fruits and vegetables separate from each other and store each type together (for example, apples with apples, carrots with carrots).
- Remove greens from plastic bags, wrap them in paper towels or tea towels, and place them in the refrigerator. If you wash these foods before storing them in the refrigerator, be sure to dry them.
- You can create a humid environment and allow air flow by storing fruits and vegetables that are prone to drying in perforated or open-mouthed plastic bags.
- Except for extreme environmental conditions, if your product is set to the set values specified in the recommended set value table, food will remain fresh for a longer period of time both in the fresh food compartment and in the freezer compartment.

Store Foods in Different Places According to Their Characteristics:	
food	Location
Egg	door shelf
Dairy products (butter, cheese)	Zero degree (breakfast) compartment if available
Fruits, vegetables and greens	Fruit and vegetable compartment, crisper or EverFresh+ compartment (if available)
Fresh meat, poultry, fish, sausage derivatives Cooked foods	Zero degree (breakfast) compartment if available
Ready-to-eat foods, packaged goods, canned goods and pickles	Top shelves or door shelf
Beverages, bottles, condiments and snacks	door shelf

Storing Food in the Freezer Compartment

- You can cool faster by activating the Fast Freeze function 4-6 hours before freezing.
- Sıcak yemekleri dondurucu bölmeye yerleştirmeden önce oda sıcaklığına getirin.
- Dondurulacak olan gıdalar, her seferinde tüketilecek kadar büyüklükte porsiyonlara bölünerek ayrı paketlerde dondurulmalıdır.
- Yiyecekleri dondurucuya koymadan önce paketlemeniz önerilir.

- Saklama süresinin geçmesini önlemek için, farklı gıdaların saklama sürelerine göre dondurma tarihini, süreyi ve yiyeceğin adını paketin üstüne yazın.
- Buzunu çözdüğünüz gıdaları hızlıca tüketin. Buzu çözölmüş gıdalar pişirilmediği sürece tekrar dondurulamaz. Buzu çözüldükten sonra tekrar dondurulmuş taze gıdaları pişirmeden tüketmek güvenli değildir.
- Taze gıda dondururken bu gıdaları halihazırda donmuş gıdalara temas ettirmeyin. Aksi takdirde, donmuş gıdaların buzu çözölür.

Donmuş Halde Satılan Yiyecekleri Saklama

- Yiyeceği saklamanız gereken süre konusunda her zaman üreticinin talimatlarına uyun. Bu talimatlarda belirtilen süreyi aşmayın!
- Gıdanın kalitesini korumak için, satın alma işlemiyle saklama arasındaki süreyi olabildiğince kısa tutmaya çalışın.
- –18 °C veya daha düşük derecelerde saklanan donmuş gıdaları satın alın.
- Ambalajında buz vb. olan gıdaları almaktan kaçının. Bu, ürünün kısmen çözölüp tekrar donmuş olabileceği anlamına gelir. Sıcaklık, yiyeceğin kalitesini etkiler.
- Gıda üreticisi tarafından önerilen saklama süresini aşmayın. Buzluktan yalnızca ihtiyacınız kadar gıda çıkarın.
- Ortamda ekstrem koşullar olduğu durumlar haricinde, ürününüz (önerilen set değeri tablosunda) belirtilen set değerlerine ayarlanırsa, hem taze gıda bölmesinde hemde dondurucu bölmede yiyecekler daha uzun süre tazeliğini korur.
- Taze gıda bölmesi daha düşük bir sıcaklığa ayarlanırsa taze meyve ve sebzeler kısmen donabilir.
- 2 yıldız bölmesi önceden dondurulmuş yiyecekler için uygundur. Dondurma ve buz küpleri saklanabilir.
- Yiyecekleri 1, 2 ve 3 yıldız bölmelerde dondurmayın.

Et ve Balık			Hazırlama Şekli	En uzun depolama süresi (ay)
Et Ürünleri	Dana Eti	Biftek	2 cm kalınlıkta kesip aralarına folyo yerleştirerek veya streç ile sıkıca sararak	6-8
		Rosto	Et parçalarını buzdolabı poşeti ile ambalajlayarak veya streç ile sıkıca sararak	6-8
		Kuşbaşı	Ufak parçalar halinde	6-8
		Şnitzel, pirzola	Kesilmiş dilimlerin arasına folyo yerleştirerek veya streç ile tek tek sararak	6-8
	Koyun eti	Pirzola	Et parçalarının arasına folyo yerleştirerek veya streç ile tek tek sararak	4-8
		Rosto	Et parçalarını buzdolabı poşeti ile ambalajlayarak veya streç ile sıkıca sararak	4-8
		Kuşbaşı	Parçalanmış etleri buzdolabı poşeti ile ambalajlayarak veya streç ile sıkıca sararak	4-8
	Sığır eti	Rosto	Et parçalarını buzdolabı poşeti ile ambalajlayarak veya streç ile sıkıca sararak	8-12
		Biftek	2 cm kalınlıkta kesip aralarına folyo yerleştirerek veya streç ile sıkıca sararak	8-12
		Kuşbaşı	Ufak parçalar halinde	8-12
		Haşlama et	Ufak parçalar halinde buzdolabı poşeti ile ambalajlayarak	8-12
	Kıyma		Baharatlanmadan, yassı paketler halinde	1-3
	Sakatat (parça)		Parçalar halinde	1-3
	Sucuk - Salam		Zarlı olsa da paketlenmelidir	1-3
	Jambon		Kesilmiş dilimlerin arasına folyo yerleştirerek	2-3

Et ve Balık		Hazırlama Şekli	En uzun depolama süresi (ay)
Kümes ve av hayvanları	Tavuk ve Hindi	Folyo içine sararak	4-6
	Kaz	Folyo içine sararak (porsiyonlar 2.5 kg'dan fazla olmamalıdır)	4-6
	Ördek	Folyo içine sararak (porsiyonlar 2.5 kg'dan fazla olmamalıdır)	4-6
	Geyik, Tavşan, Karaca	Folyo içine sararak (porsiyonlar 2.5 kg'dan fazla olamamalı, ayrıca kemikleri ayrılmalıdır)	6-8
Balık ve deniz ürünleri	Tatlısu balıkları (Alabalık, Sazan, Turna, Yayın)	İçi ve pulları iyice temizlendikten sonra yıkanıp kurulanmalı, gerektiğinde kuyruk ve baş kısmı kesilmelidir.	2
	Yağsız balıklar (Levrek, Kalkan, Dilbalığı)		4-6
	Yağlı balıklar (Palamut, Uskumru, Lüfer, Tekir, Hamsi)		2-4
	Kabuklu deniz ürünleri	Temizlenmiş ve torbalar içinde	4-6
	Havyar	Ambalajında, alüminyum ya da plastik kap içinde	2-3

"Tabloda belirtilen saklama süreleri -18°C saklama sıcaklığı baz alınarak verilmiştir. "

Sebzeler ve Meyveler	Hazırlama Şekli	En uzun depolama süresi (ay)
Ayşekadın ve Sırık fasulye	Yıkayıp küçük parçalar halinde kestikten sonra 3 dk şok haşlama yaparak	10-13
Bezelye	Ayıklayıp yıkadıktan sonra 2 dk şok haşlama yaparak	10-12
Lahana	Temizlendikten sonra 1-2 dk şok haşlama yaparak	6-8
Havuç	Temizleyip dilimler halinde kestikten sonra 3-4 dk şok haşlama yaparak	12
Biber	Sapını kesip, ikiye bölüp ve çekirdeklerini ayırdıktan sonra 2-3 dk şok haşlama yaparak	8-10
Ispanak	Yıkayıp temizledikten sonra 2 dk şok haşlama yaparak	6-9
Pırasa	Doğradıktan sonra 5 dk şok haşlama yaparak	6-8
Karnabahar	Yapraklarını ayırın, göbeğini de parçalara ayırdıktan sonra az limonlu suda 3-5 dk şok haşlama yaparak	10-12
Patlıcan	Yıkandıktan sonra 2cm.'lik parçalar halinde keserek 4 dk şok haşlama yaparak	10-12
Kabak	Yıkandıktan sonra 2cm.'lik parçalar halinde keserek 2-3 dk şok haşlama yaparak	8-10
Mantar	Yağda hafif soteleyerek üzerine limon sıkarak	2-3
Mısır	Temizleyip koçanıya veya taneli olarak paketleyerek	12
Elma ve Armut	Kabuğunu soyarak dilimleyip 2-3 dk şok haşlama yaparak	8-10
Kayısı ve şeftali	İkiye bölüp çekirdeklerini çıkartın	4-6
Çilek ve Ahududu	Yıkayıp ayıklayarak	8-12
Pişmiş meyve	Kap içinde %10 şeker katarak	12
Erik, Kiraz, Vişne	Yıkayıp, saplarını ayıklayarak	8-12

"Tabloda belirtilen saklama süreleri -18°C saklama sıcaklığı baz alınarak verilmiştir. "

Süt Ürünleri	Hazırlama Şekli	En uzun Depolama Süresi (Ay)	Depolama Koşulları
Peynir (beyaz peynir hariç)	Dilimler halinde arasına folyo yerleştirerek	6-8	Kısa süreli depolamada orijinal paketinde bırakılabilir. Uzun süreli depolamada ayrıca alüminyum veya plastik folyoya sarılmalıdır.
Tereyağı, margarin	Kendi ambalajında	6	Kendi ambalajında veya plastik kaplarda

"Tabloda belirtilen saklama süreleri -18°C saklama sıcaklığı baz alınarak verilmiştir. "

"Belirli bir zaman diliminde dondurulabilecek taze gıda miktarı tip etiketinde belirtilmiştir."

Dondurucu Bölmesi	Soğutucu Bölmesi	Açıklamalar
Ayarı	Ayarı	
-22	4°C	Bu ayarlar, genel kullanım için tavsiye edilir.
Hızlı Dondur	4°C	Yiyeceklerinizi kısa zamanda dondurmak istediğinizde kullanın. İşlem bittiği zaman ürününüz önceki konumuna geri dönecektir.
-18°C veya daha soğuk	2°C	Ortamın sıcak olması veya kapının sık açılıp kapanmasından dolayı soğutucu bölmenizin yeterince soğuk olmadığını düşünüyorsanız, bu ayarları kullanın.

Derin Dondurucu Bilgileri

IEC 62552 standartlarına göre, her 100 litre dondurucu bölme hacmi için ürünün 25°C oda sıcaklığında 4,5 kg'lık gıda maddesini -18°C veya daha düşük sıcaklıklarda 24 saatte dondurabilmesini gerektirir.

Gıda maddelerinin uzun süre korunması ancak -18°C ve daha düşük sıcaklıkta mümkündür.

Gıda maddelerinin tazeliğini (derin dondurucuda -18°C ve daha düşük sıcaklıklarda) aylarca koruyabilirsiniz.

Food items to be frozen should not be allowed to come into contact with previously frozen foods to prevent them from partially thawing.

To extend the storage time of vegetables in frozen form, boil them and drain them. After draining, place them in airtight packages and place them in the freezer. Bananas, tomatoes, lettuce, celery, hard-boiled eggs, potatoes, etc. are not suitable for freezing. If these foods are frozen, only their nutritional value and eating quality will be negatively affected. There is no deterioration that threatens human health.

Placing Foods

Freezer compartment shelves: Different frozen foods such as meat, fish, ice cream, vegetables, etc.

Refrigerator compartment shelves: Foods in pots, closed plates and closed containers, eggs (in closed containers)

Refrigerator door shelves: Small and packaged food or beverages

Crisper: Vegetables and fruits

Fresh food compartment: Delicatessen products (breakfast products, meat products to be consumed in a short time)

Changing the Lighting Lamp

The lamp(s) used in this device cannot be used for lighting purposes at home. The purpose of this lamp is to assist the user in placing refrigerator / freezer foods safely and comfortably.

Door Open Alert

Your refrigerator's door open alarm system may differ depending on the model.

Version 1;

If the door of the product remains open for a certain period of time (between 60 seconds and 120 seconds), an audible warning will be heard, and depending on the product model, a visual warning (lighting flashing) may also be given. When you close the door of the product or press any button on the product screen, if available, the warning sound will stop.

Version 2;

If the door of the product remains open for a certain period of time (between 60 seconds and 120 seconds), a door open warning starts to be given. The door open warning is given gradually. First, an audible warning starts to sound. If the product door is not closed after 4 minutes, a visual warning (light flashing) is activated. If any button on the product screen is pressed, the door open warning will be delayed for a certain period of time (between 60 seconds and 120 seconds). Afterwards, the process will start again. When the product door is closed, the door open warning will be canceled.

Product Features

Additional Information

[Vegetable Technologies](#)

[Ice Storage Area](#)

[Ovarian](#)

[Vegetable Basket](#)

[AeroFresh](#)

[Humidity Controlled Vegetable Rack](#)

Vegetable Technologies

Blue light

Fruits and vegetables stored in vegetable bins illuminated with blue light preserve their vitamin C values by continuing to photosynthesize with the effect of the wavelength of blue light.

VitaminZone

Fruits and vegetables stored in vegetable bins illuminated with VitaminZone technology preserve their vitamin values for longer thanks to blue, green, red lights and dark cycles that simulate the day cycle.

If the refrigerator door is opened during the dark period of VitaminZone technology, your refrigerator will automatically detect this and illuminate your crisper for comfortable use with one of the blue, green or red lights. The dark period will continue when you close the refrigerator door, representing the night period in the day cycle.

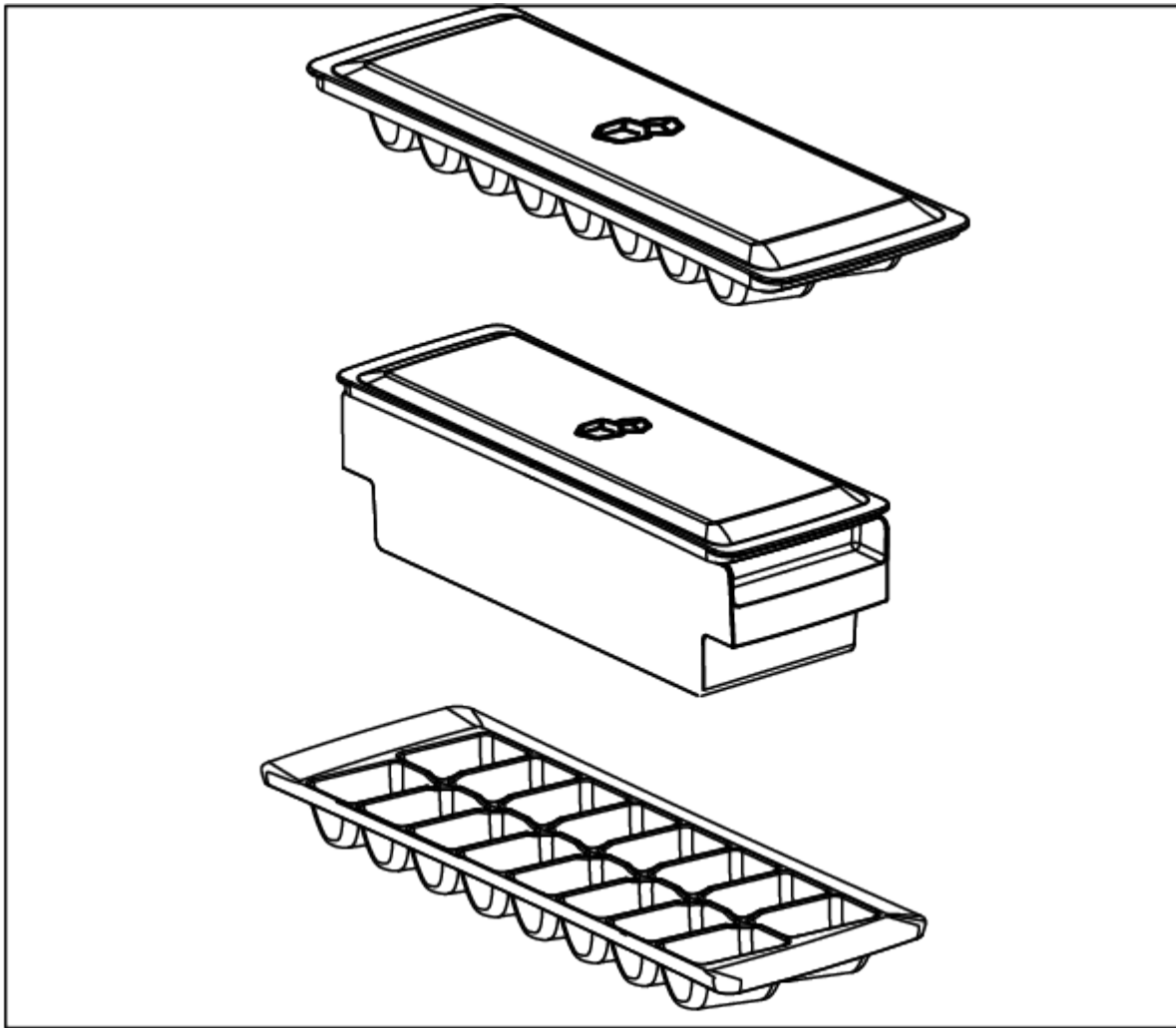
Ice Storage Area

Ice Container

The ice container allows you to easily take ice from the product.

Using the ice tray

1. Remove the ice container from the freezer compartment.
2. Fill the ice bin with water.
3. Place the ice container in the freezer compartment. After about two hours the ice is ready.
4. Remove the ice tray from the freezer compartment and gently bend it over the tray in which you will serve the ice. The ice will easily fall into the tray.



Ovarian

You can place the egg cup on any door or body shelf you want.

If it is to be placed on the body shelf, it is recommended to choose the cooler lower shelves.

ANNOUNCEMENT



Never place the egg cup in the freezer compartment.



Vegetable Basket

The refrigerator crisper is especially designed to keep vegetables fresh without losing their moisture. For this purpose, cold air circulation is intensified throughout the crisper. Store your vegetables and fruits in this compartment. To preserve green leafy vegetables for longer periods, do not place them side by side with fruits.

AeroFresh

It is an air distribution system that provides homogeneous temperature distribution. Thanks to this air circulation, homogeneous temperature distribution is achieved within the fresh food storage compartment, while temperature fluctuations are kept at low levels. Air is not blown directly onto the food and helps reduce moisture loss. It preserves the freshness of foods stored in the fresh food compartment of the refrigerator. In this way, your food is stored at more stable temperatures and its contact with air is reduced. Foods are prevented from losing moisture and drying and shrinking, ensuring freshness for a longer period of time.

Humidity Controlled Vegetable Rack

Full fresh+

With the humidity controlled vegetable crisper feature, the humidity levels of vegetables and fruits are kept under control and food remains fresh for a longer period of time.

We recommend that you place leafy vegetables such as lettuce, spinach, and similar vegetables that are sensitive to moisture loss in the vegetable rack as horizontally as possible, rather than upright on their roots.

While placing the vegetables, take into consideration the specific gravity of the vegetables and position the heavy and hard vegetables at the bottom and the light and soft vegetables at the top.

Never leave vegetables in bags in the crisper. Leaving vegetables in bags will cause them to rot in a short time.

In cases where contact with other vegetables is not preferred for hygiene reasons, use packaging materials such as paper with a certain porosity instead of bags.

Do not place fruits such as apples, pears, apricots, and peaches, which produce high levels of ethylene gas, in the same vegetable bin with other fruits and vegetables. The ethylene gas released from these fruits can cause your other fruits and vegetables to ripen faster and rot more quickly.

Maintenance and Cleaning

ANNOUNCEMENT



WARNING:

Read the “Safety Instructions” section first.

ANNOUNCEMENT



WARNING:

Before cleaning your refrigerator, unplug it or disconnect the power from the fuse to which the product is connected.

- Do not use sharp and abrasive tools when cleaning the product. Household cleaning products, soap, detergent, gas, gasoline, thinner, alcohol, polish, etc. Do not use substances.
- The ventilation grille on the back of the product should be dusted (without opening the cover) at least once a year. Clean the product with a dry cloth.
- Be careful not to let water enter the lamp housing or other electrical parts.
- Clean the door with a damp cloth. To remove the door and body shelves, remove all contents. Remove the door shelves by lifting them up. After cleaning and drying, replace it by sliding it from top to bottom.
- Never use water or cleaning agents containing chlorine to clean the outer surface of the product and chrome-plated parts. Chlorine causes rust on such metal surfaces.
- In order to prevent the pressure on the plastic part from being removed and deformed, do not use sharp, abrasive tools, soap, household cleaners, detergent, gas, gasoline, polish, etc. Do not use substances. For cleaning, use a soft cloth with warm water and dry.
- In Non-No Frost Products; Water droplets and frost up to a finger thickness form on the rear wall of the refrigerator compartment. Do not clean, never apply oil or similar substances.
- Use only a slightly damp microfiber cloth to clean the outer surface of the product. Sponges and other types of cleaning cloths may cause scratches.
- To clean the interior surfaces of the product, wash all removable parts with a mild solution of soap, water and baking soda. Wash and dry completely. Avoid getting water on the lights and control panel.

ANNOUNCEMENT



ATTENTION:

Do not use vinegar, rubbing alcohol or other alcohol-based cleaners on any interior surface.

Stainless Steel Exterior Surfaces

Use a non-abrasive stainless steel cleaner and apply with a soft, lint-free cloth. To polish, gently wipe the surface with a microfiber cloth dampened with water and use a dry polishing chamois. Always follow the grain of the stainless steel.

Preventing Bad Odors

No substances that will cause odor are used in the production of your product. However, odor may occur due to improper food storage and not cleaning the inner surface of the product properly.

- To prevent this problem, clean it with carbonated water every 15 days.
- Store food in closed containers as microorganisms spread from food stored open will cause bad odor.
- Never store expired or spoiled foods in your refrigerator.

ANNOUNCEMENT



Tea is one of the best known odor receptors. Place the brewed tea pulp into the product in an open container and remove it after 12 hours at the latest. If you keep the tea pulp in the product for more than 12 hours, it may become the source of the odor as it will collect the organisms that cause the odor.

Protection of Plastic Surfaces

If oil is spilled on plastic surfaces, clean it immediately with warm water as the oil may damage the surface.

Troubleshooting

The refrigerator does not work.

- The plug is not fully seated in the socket. >>> Insert the plug fully into the socket.
- The fuse of the socket to which the product is connected or the main fuse has blown. >>> Check the fuse.

Sweating on the side wall of the refrigerator compartment (MULTI ZONE, COOL CONTROL and FLEXI ZONE).

- The door was opened and closed too frequently. >>> Be careful not to open and close the door of the product too frequently.
- The environment is very humid. >>> Do not install the product in very humid environments.
- Foods containing liquid may be stored in open containers. >>> Store foods containing liquid in closed containers.
- The product door is left open. >>> Do not keep the product door open for a long time.
- The thermostat is set too cold. >>> Set the thermostat to the appropriate value.

Compressor is not working.

- In the event of a sudden power outage or unplugging and plugging in, the compressor protective thermic will blow out because the pressure of the gas in the product cooling system has not yet been balanced. The product will start working after approximately 6 minutes.
- It is in the defrosting cycle. >>> This is normal for a product that performs fully automatic defrosting. The defrosting cycle occurs periodically.
- The product is not plugged into the socket. >>> Make sure the plug is plugged into the socket.
- Temperature settings are not set correctly. >>> Select the appropriate temperature setting.
- The electricity has been cut. >>> When power is restored, the product will continue to operate normally.

The operating noise increases while the refrigerator is operating.

- The operating performance of the product may change depending on the change in ambient temperature. This is normal and not a malfunction.

The refrigerator operates too often or for too long.

- The new product may be larger than the old one. Larger products work longer.
- The room temperature may be high. >>> It is normal for it to work longer in hot environments.
- The product may have been plugged in recently or new food may have been added. >>> When the product is plugged in recently or new food is added, it takes longer for the product to reach the set temperature. This is normal.
- Large amounts of hot food may have been placed in the product recently. >>> Do not place hot food in the product.
- The doors have been opened frequently or have been left open for a long time. >>> The warm air entering the product causes it to operate for a longer period of time. Do not open the doors too frequently.
- The freezer or refrigerator door may be ajar. >>> Check if the doors are completely closed.
- The product is set to a very low temperature. >>> Set the temperature of the product to a higher degree and wait for it to reach this temperature.

- The refrigerator or freezer door seal may be dirty, worn, broken or not properly seated. >>> Clean or replace the seal. A damaged/broken door seal will cause the product to operate for longer periods of time to maintain the current temperature.

Freezer temperature is too low but refrigerator temperature is sufficient.

- The freezer compartment temperature is set too low. >>> Set the freezer compartment temperature to a higher degree and check it.

The refrigerator temperature is too low but the freezer temperature is sufficient.

- The refrigerator compartment temperature is set to a very low value. >>> Set the refrigerator compartment temperature to a higher degree and check.

Foods stored in refrigerator compartment drawers freeze.

- The refrigerator compartment temperature is set too low. >>> Set the refrigerator compartment temperature to a higher value and check it.

The temperature in the refrigerator or freezer is too high.

- The refrigerator compartment temperature may be set to a very high value. >>> The refrigerator compartment temperature setting has an effect on the freezer compartment temperature. Change the refrigerator or freezer compartment temperature and wait until the temperature of the relevant compartments reaches a sufficient level.
- Doors were opened frequently or remained open for long periods of time. >>> Do not open the doors too often.
- The door may be ajar. >>> Close the door completely.
- The product may have been recently plugged in or new food may have been added. >>> This is normal. When the product is recently plugged in or new food is added, it takes longer than usual for the product to reach the set temperature.
- Large amounts of hot food may have been placed in the product recently. >>> Do not place hot food in the product.

Shaking or noise.

- The ground is not flat or durable. >>> If the product shakes when moved slowly, balance the product by adjusting its feet. Also make sure that the ground is durable enough to support the product.
- Items placed on the product may be making noise. >>> Remove items on the product.
- Liquid flowing from the product, spraying, etc. voices are coming.
- Liquid and gas flows occur due to the operating principles of the product. >>> This is normal and not a malfunction.

Wind noise comes from the product.

- A fan is used to perform the cooling process of the product. This is normal and not a malfunction.

Sweating occurs on the inner walls of the product.

- Hot and humid weather increases icing and condensation. This is normal and not a malfunction.
- The doors have been opened frequently or have been open for a long time. >>> Do not open the doors too often, close them if they are open.
- The door may be ajar. >>> Close the door completely.

Sweating occurs on the outside of the product or between the doors.

- The air may be humid, this is quite normal in humid weather. >>> Condensation disappears when humidity decreases.

The product has a bad smell inside.

- There was no regular cleaning. >>> Clean the inside of the product regularly with a sponge, warm water or carbonated water.
- Some containers or packaging materials may cause odor. >>> Use odor-free containers or packaging materials.
- Foods are placed in open containers. >>> Store food in closed containers. Microorganisms spread from foods stored with their lids open may cause bad odors.
- Remove expired and spoiled food from the product.

The door won't close.

- Food packages may be blocking the door from closing. >>> Move the packages that are blocking the doors.
- The product may not be standing completely upright on the floor. >>> Balance the product by adjusting its feet.
- The ground is not flat or solid. >>> Make sure the ground is flat and solid enough to support the product.

The vegetable bins are stuck.

- Food may be touching the top of the drawer. >>> Organize the food in the drawer.

There is heat on the product surface.

- While your product is operating, high temperatures may be observed between the two doors, on the side panels and in the rear grill area. This is normal and does not require any service.

The fan continues to run when the door is opened.

- The fan may continue to run when the freezer door is opened.