

Hand Blender with Grater

User Manual



RHB 6050 / RHB 6050 K /
RHB 6050 S

EN



01M-8818941100-1922-06
01M-8818931100-1922-06
01M-8819031100-1922-06

Please read this guide first!

Dear Customer,

We would like you to achieve the optimal efficiency from this high quality product which has been manufactured with the state of the art technology. Please make sure you read and understand this guide and supplementary documentation fully before use and keep it as a reference. Include this guide with the unit if you hand it over to someone else. Observe all warnings and information herein and follow the instructions.

Keep in mind that this user guide may apply to several product models. The guide clearly indicates any variations of different models.

Symbols and their meanings

Following symbols have been used throughout this guide:



Important information and beneficial advices regarding the usage of the device.



WARNING: Warnings about hazards to life and property.



Suitable for contact with food.



Do not immerse the appliance, the power cord or the plug in water or in any other liquids.



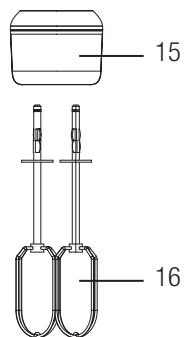
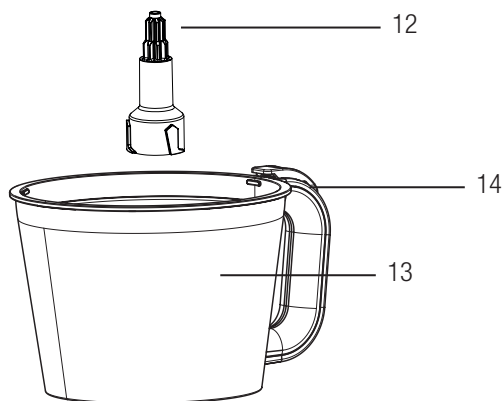
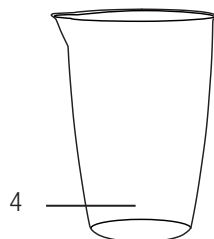
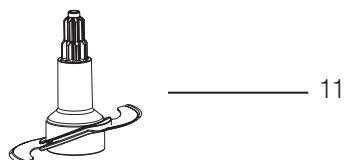
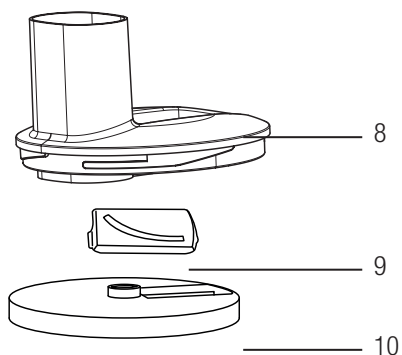
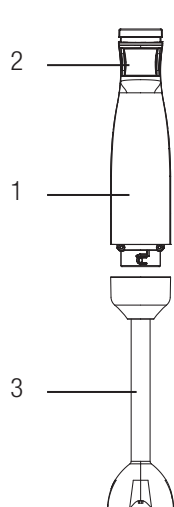
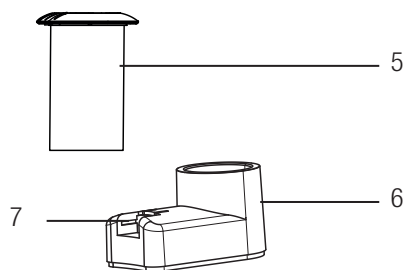
Protection class against electric shock.



Warning of electric shock.



RECYCLED &
RECYCLABLE
PAPER



- 1. Motor body
- 2. Start/Turbo Button
- 3. Chopping Blade
- 4. Measuring cup
- 5. Pushing Apparatus
- 6. Gear Box
- 7. Gear Box Button
- 8. Chopper Hopper Cover
- 9. Grater and Chopping Knives
- 10. Grater Disc
- 11. Shredding Knife
- 12. Accessory Shaft
- 13. Process Chamber
- 14. Container Lock
- 15. Beater Accessory Holder
- 16. Whisking blade

Technical data

Model	RHB 6050 - RHB 6050 K - RHB 6050 S
Power Source	220-240 V~, 50-60 Hz
Power	1500 W
Insulation class	II

The values provided with the appliance or its accompanying documents are laboratory readings in accordance with the respective standards. These values may differ depending on the use and ambient conditions.

CONTENTS

1 Important safety and environmental instructions	6
1.1 General Safety	6
1.2 Compliance with WEEE regulations and waste disposal	8
1.3 Packaging information	8
1.4 What to do for energy saving	8
2 Use	9
2.1 First Operation	9
2.2 Intended use.....	9
2.3 Blending.....	10
2.4 Whisking	11
2.5 Chopping.....	12
2.6 Using the grater disc	14
3 Cleaning and Maintenance	16
3.1 Cleaning.....	6
3.2 Storage	17
3.3 Transportation and shipping.....	17

1 Important safety and environmental instructions

This section contains safety instructions to prevent hazards that can result in injury or property damage. Any warranty is void if these instructions are not followed.

1.1 General safety

- This appliance complies with international safety standards.
- This appliance is not designed for commercial use, it is intended for use at home and in similar applications as specified below:
 - In personnel kitchen areas in shops, offices and other working areas,
 - Ranches,
 - Areas used by customers in motels and hotels, and other residential settings,
 - Bedrooms and breakfast locations.
- Appliance may be used by persons with limited physical, perceptual or mental abilities or persons with a lack of experience and knowledge if they are supervised or given instructions on the operation of the appliance and any relevant risks they may be encountered. Children should not tamper with the appliance. Cleaning and user maintenance must not be carried out by children. This appliance may not be used by children.
- Store the appliance and its electrical cord out of the reach of children.
- Do not use the appliance if the power cord, the appliance or the appliance blade is damaged. Contact authorised service.
- Use only original parts or parts recommended by the manufacturer.
- Do not disassemble the appliance.
- Your mains power supply should be in align with the specified information on the type tag of the appliance.
- Do not use the appliance with an extension cord.
- Do not unplug the appliance by pulling on the cord.
- When it is left unattended, before attaching/detaching accessories, or before cleaning, wait

1 Important safety and environmental instructions

for the moving parts to stop and unplug the power cord of the appliance.

- Do not touch the plug of the appliance while your hands are damp or wet.
- Do not use the appliance for hot meals.
- Warning: Your product is equipped with a safety thermic for protection. Your product will automatically stop due to overheating in long-term use. After a short cooling period, you can restart your appliance.
- Use the appliance only with the provided rubber base and the bowl.
- Do not operate the device for more than 30 seconds without interruption. After starting, let it rest for 3 minutes before using it again. Do not operate the appliance with the empty bowl.
- To avoid damaging the blades and the appliance, remove bones and seeds from foods.
- The appliance is not suitable for dried or rough food that may lead the blades to become blunt very rapidly.
- Follow all warnings to avoid injuries due to misuse.
- Do not touch the accessories while emptying the container, during cleaning and after use, without stopping the blades and unplugging the product. Handle the chopping blade carefully, trying to hold it only by its plastic part.
- After cleaning, dry the appliance and all its components before connecting it to power and installing the components.
- Do not immerse the appliance, the power cord or the plug in water or in any other liquids.
- Do not operate the appliance or its components over or near hot surfaces or do not put on such surfaces.
- If you keep the packaging materials, keep them out of the reach of children.

1 Important safety and environmental instructions

1.2 Compliance with the WEEE regulations and waste disposal



This product does not contain the dangerous and prohibited materials indicated in "Waste Electrical and Electronic Equipment Control Regulation" published by Ministry of Environment and Urbanisation of the Republic of Turkey. Complies with WEEE Regulations. This product was manufactured from recyclable and reusable high quality parts and materials. Therefore, do not dispose of this product with other domestic wastes at the end of its life cycle. Take it to a collection point for recycling of electrical and electronic equipment. You can ask your local administration about these collection points. You can help protect the environment and natural resources by delivering the used products for recycling.

1.3 Packaging information



The product's packaging is made of recyclable materials, in accordance with the National Legislation. Do not dispose of the packaging waste with the household waste or other wastes, dispose it to the packaging collection areas specified by local authorities.

1.4 What to do for energy saving

Observe the recommended periods specified in the manual during use. Unplug the appliance after each use.

2 Operation

2.1 First operation

Remove all packaging and labeling materials and dispose of them in accordance with the applicable law.

Clean the device before using the device for the first time (see "Cleaning and Care").

Use the appliance in an upright position on a stable, flat, clean, dry and non-slip surface.

2.2 Intended use

- This appliance is designed for household use only. It should not be used for commercial purposes.
- Do not use the appliance for any purpose other than its intended use.
- This appliance is intended for slicing and blending food only.



- Unplug the appliance when not in use.
- When you first press the trigger, it switches to the "operating" position, and when you press the trigger all the way, it switches to the "turbo" function.

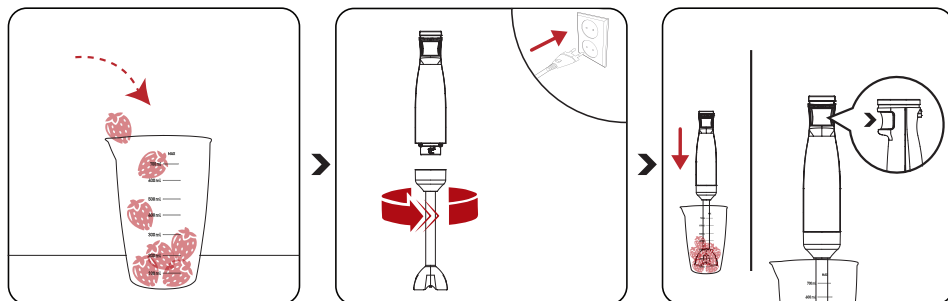
2.3 Blending

Warnings:



- Do not touch the sharp parts of knives with bare hands
- Make sure that the chopping blade is fully seated on the motor unit. Keep the device upright while mixing ingredients in the mixing bowl.

You can use your hand blender to prepare sauces, soups, mayonnaise, baby food, milkshakes, etc.



Put small pieces of the food you want to puree or blend into the measuring cup (4).

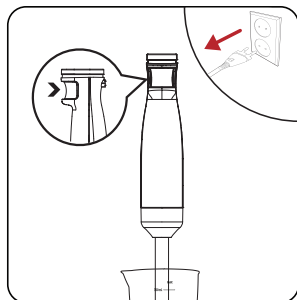
Attach the chopping blade (3) to the motor body (1) by turning it counterclockwise until it locks. Plug in the appliance.

Insert the chopping blade (3) into the measuring cup (4) containing the ingredients and start the device by pressing the low or high speed start button.

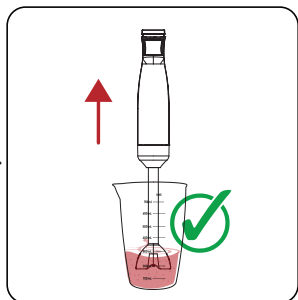
2 Operation



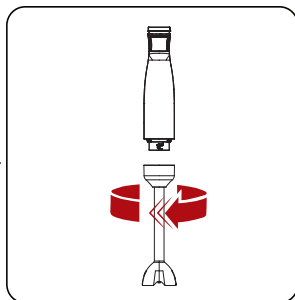
- If the ingredients stick to the sides of the plastic container, remove them with a spatula and continue mixing.



Turn the appliance off and unplug it.



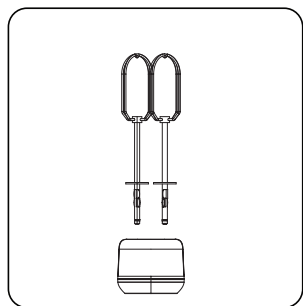
Remove the chopping blade (3) from the measuring cup (4).



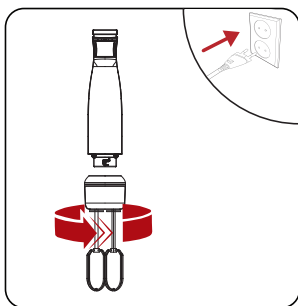
Turn the chopping blade (3) clockwise to detach it from the motor unit (1).

2.4 Whisking

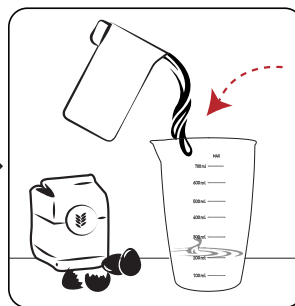
You can use the whisk attachment to whip cream, egg whites, ready-made dessert batter, etc.



Fit the whisking blade (16) into the whisker accessory holder (15) so that it clicks into place.

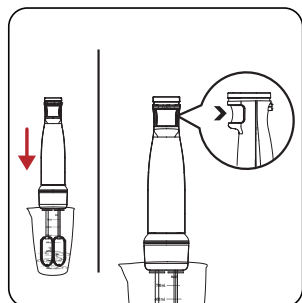


Attach the whisking blade holder (15) to the motor body (1) by turning it counter-clockwise. Plug in the appliance.

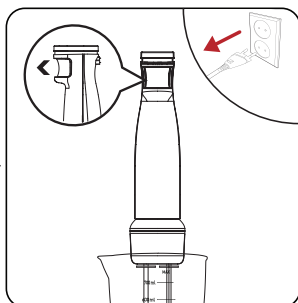


Put the ingredients you want to process into the measuring cup (4).

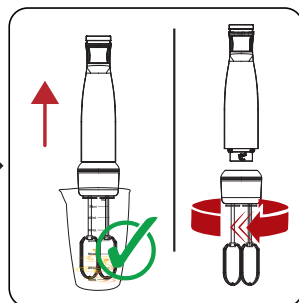
2 Operation



Insert the whisking blade (16) into the measuring cup (4) containing the ingredients and press and hold the start button (2).



When finished, release the start button (2) and unplug the appliance.



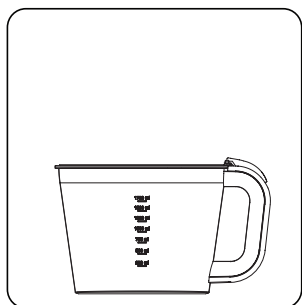
Remove the whisking blade (16) from the measuring cup (4). Separate the whisking blade (16) from the motor body (1) by turning it clockwise.

2.5 Chopping

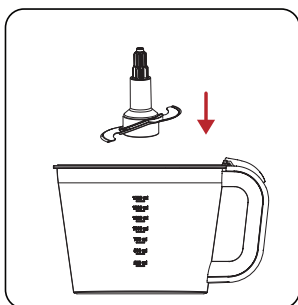
Warnings:



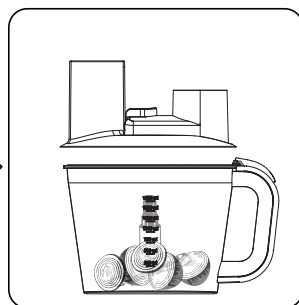
- Do not crush extremely hard ingredients such as coffee beans, ice, coconut, cereals or bones. Remove the stems of the plants, the shell of the walnut, and the bone, nerve and cartilage of the meat.
- You can use it to shred minced meat, cheese, onion, mint and similar herbs, garlic, carrots, walnuts, almonds, prunes, etc.
- Do not touch the blades with bare hands. The blades are very sharp.



Place the processing chamber (13) on a flat surface.

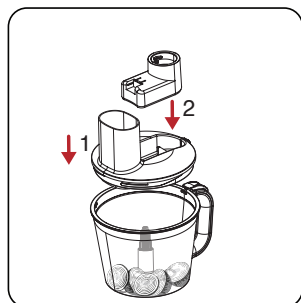


Insert the shredding blade (11) into the processing chamber (13).

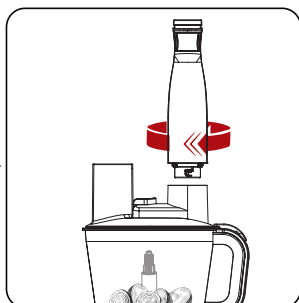


Chop large pieces of food into small pieces before putting the ingredients into the processing chamber (13).

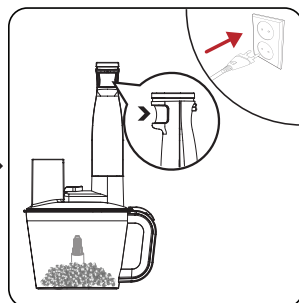
2 Operation



Place the chopper hopper cover and gearbox (6) on the hopper (13).



Fit the motor body (1) onto the gearbox (6) by turning it clockwise.



Plug in the appliance and press and hold the start button (2).

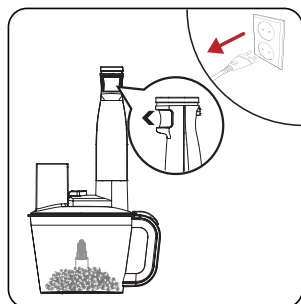
Warnings:



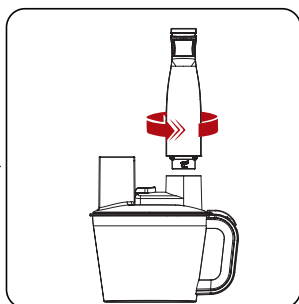
- Make sure that the container lock (14) is fully engaged with the chopper hopper lid (8).
- If hot liquid is poured into the hopper, care must be taken as sudden vaporization may occur. Do not put food with a temperature higher than 70°C into the hopper and operate the product for a maximum of 30 minutes with food at this temperature.



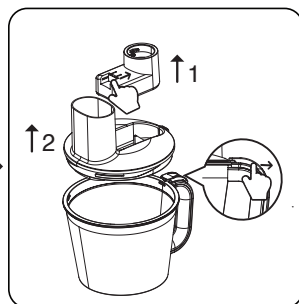
- When you first press the trigger, it switches to the "operating" position, and when you press the trigger all the way, it switches to the "turbo" function.



When finished, release the start button and unplug the appliance from the power outlet.

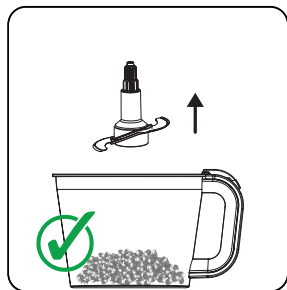


To remove the motor body (1), turn the motor housing counterclockwise to remove it.



To remove the chopper bowl cover (8), first slide the latch (7) on the gearbox to the right and remove the attachment (6). Then press the container lock (14) and remove the hopper lid (8) by turning it.

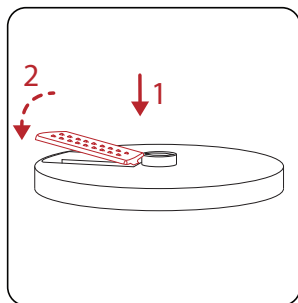
2 Operation



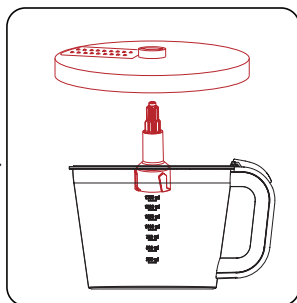
Carefully remove the shredding blade (11).

2.6 Using the grater disk

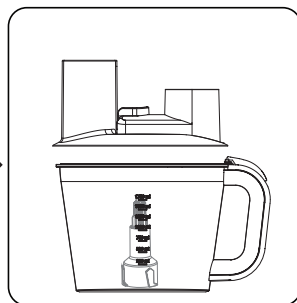
You can use the grater and slicer blades to grate and slice ingredients such as cucumber, zucchini, carrot, eggplant.



Hold the grater and chopping blade (9) facing upwards and insert it into the grater disc (16).



Insert the accessory carriage shaft (12) into the fixed shaft in the processing chamber (13) and then insert the grater disc (10).

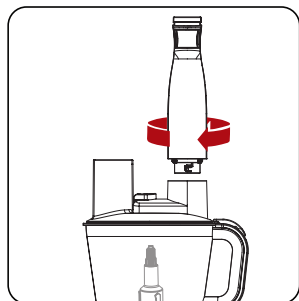


Then close the chopper hopper cover (8).

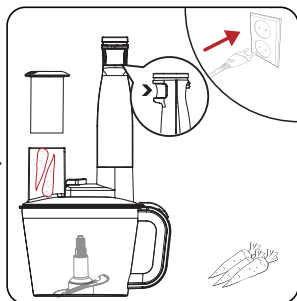
2 Operation



- Push gently from the bottom to remove the grater blade (9) from the disk (10).
- A "click" is heard when the chopper bowl lid (8) is fully closed.



Fit the motor housing (1) onto the gear-box (6) by turning it clockwise.

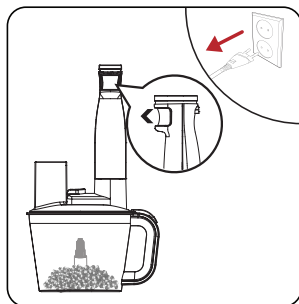


Plug in the appliance. Place your food in the feed opening and push it with the pushing attachment (5), press and hold the start button (2) and pass it through the grater.

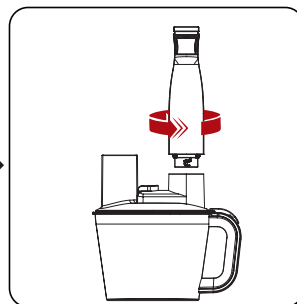


Warnings:

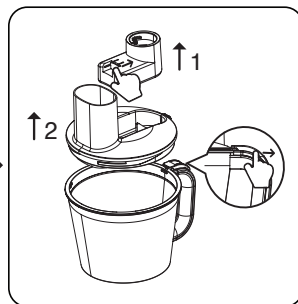
- Never use your fingers, fork, knife, etc. to push.
- Do not attach the blades (11) to the accessory carrier shaft (12) while grating.



When finished, wait for the disk (10) to stop and unplug it from the socket.

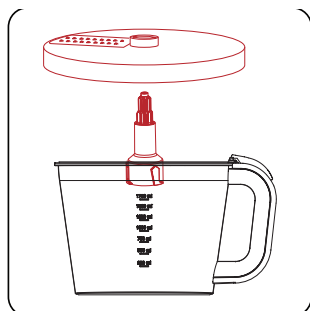


To remove the motor housing (1), turn the motor body counterclockwise to remove it.



To remove the chopper bowl cover (8), first slide the latch (7) on the gearbox to the right and remove the attachment (6). Then press the container lock (14) and remove the hopper lid (8) by turning it.

2 Operation



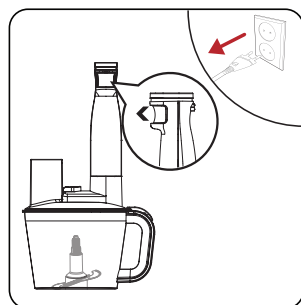
Holding the accessory carriage shaft (12), remove it together with the grater disk (10) and remove your food from the processing bowl (13).

3 Cleaning and maintenance

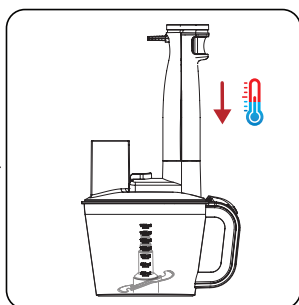
3.1 Cleaning

Warnings:

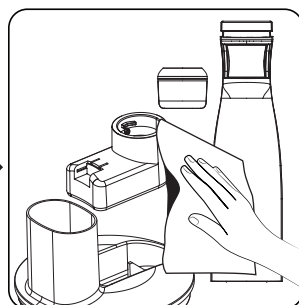
- Never place the gearbox under running water and never put it in the dishwasher.
- Never use gasoline, solvents, abrasive cleaners, metal objects, or hard brushes to clean the appliance.
- Do not touch the chopping blades with bare hands. The blades are very sharp. Use any brush during cleaning!
- Do not place the product body and the power cord in water or other liquids, do not put them under running water and never put them in the dishwasher.
- You can wash the surfaces of the shredder bar that enter the chamber under the tap, but be careful not to get water on the inner surfaces.



Turn the appliance off and unplug it.

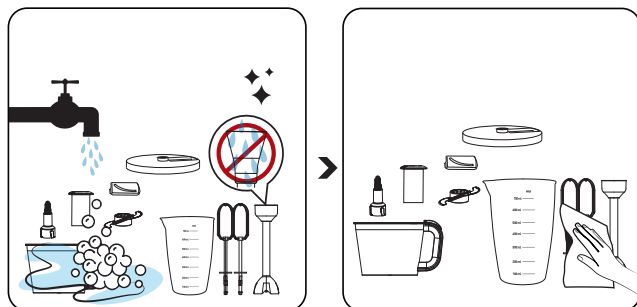


Wait for the appliance to completely cool down.



Clean the motor unit (3), whisk holder (17) and lockable cover (7) with a damp soft cloth and then wipe dry.

3 Cleaning and maintenance



Wash the pusher (5), shredding blade (11), accessory shaft (12), processing bowl (13), grater blade (9), grater disc (10), whisking blade (16), shredding blade (3) and measuring cup (4) in warm water with detergent. The container lid can be washed in the dishwasher.

Dry the washed parts with a dry cloth before putting them away.



It is easier to clean the appliance right after using it.

3.2 Storage

- If you do not plan to use the appliance for a long period of time, please store it carefully.
- Ensure that the appliance is unplugged, cooled down completely.
- Do not wrap its cable around the appliance.
- Store the appliance in a cool and dry environment.
- Keep the appliance out of the reach of children.

3.3 Transportation and shipping

- During transportation and shipping, carry the appliance with its original packaging. The packaging of the appliance will protect the appliance against physical damage.
- Do not place heavy objects on the device or its packaging. The appliance may get damaged.
- If the appliance is dropped, the appliance may not operate or permanent damage may occur.