

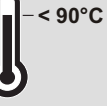
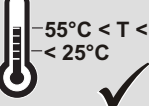
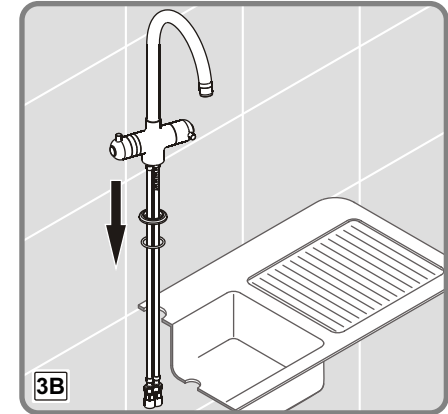
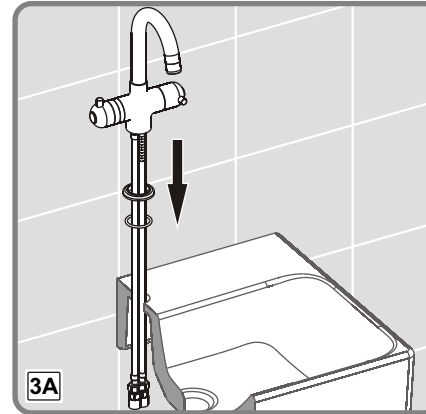
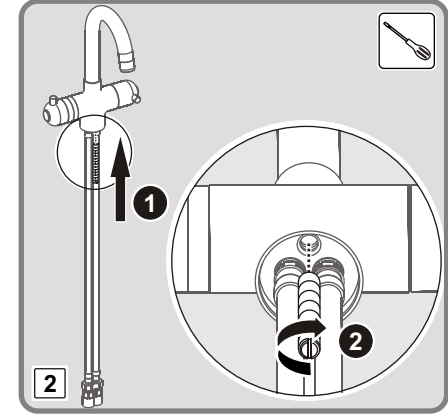
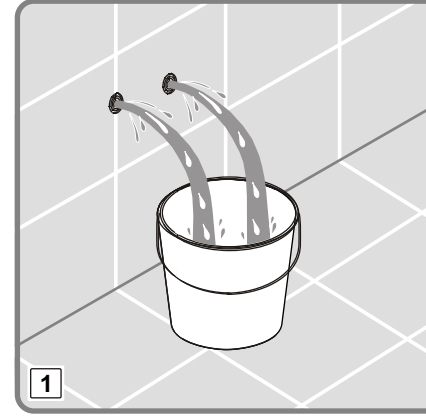
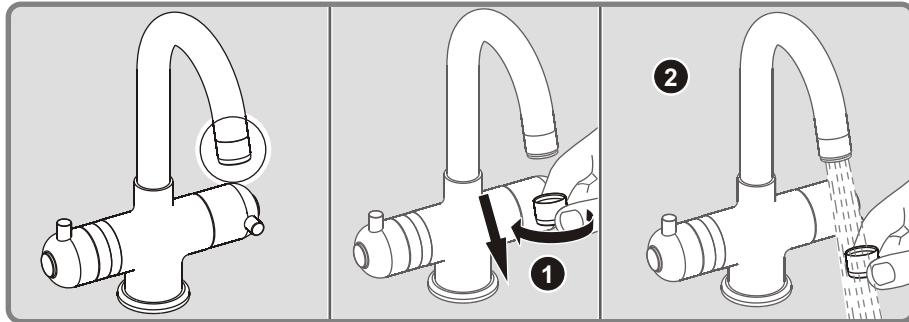
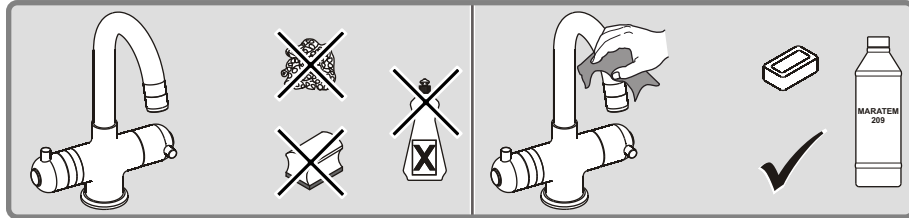
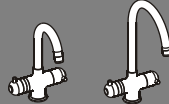
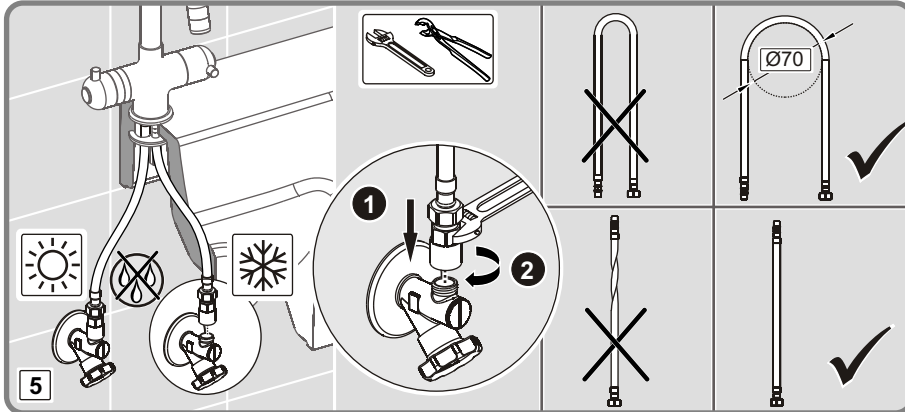
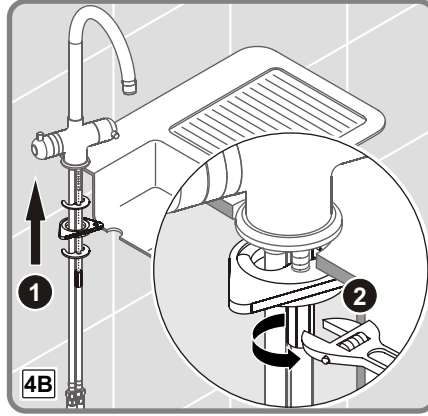
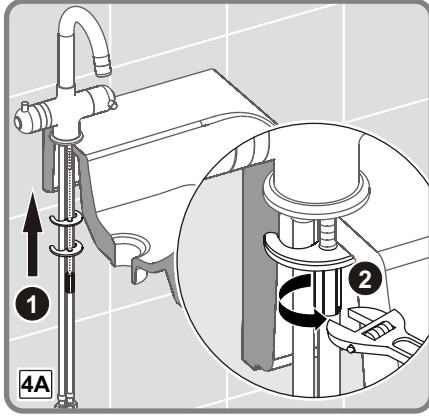
	<b>P</b>	<b>P bar</b>	 max.10 min.0,5	
			<b>T</b> °C	 < 90°C  55°C < T < 65°C < 25°C





## THERMOSTATIC MIXERS



### PRODUCT FEATURES

Thermostatic basin, bath and shower mixers allow you to set a desired water temperature and provide water flow at that set temperature. This eliminates the problem of having to adjust water temperature and prevents the risk of scalding due to temperature changes in the system. In case of water cut, the cartridge within the product locks itself automatically and stops water flow. This eliminates completely the risk of scalding. Thanks to a flywheel with 90° turn on-off seal, you can keep water at a desired constant temperature and adjust the water discharge quantity.

VitrA thermostatic mixers are available in five models: basin, concealed shower-bath and wall-mounted shower-bath. All the models offer an easy and comfortable use and they are used in the same manner. There is a button on the flywheel where the cartridge is located in the mixers. This button is the point where water has been set at 38° C when the product comes out of the factory. If you want to have a higher temperature, all you need to do is to push the button and turn the flywheel in the arrow direction. The use is a simple operation for adults and safe enough to prevent accidental scalding of children and the elderly. The special alloyed metal in the thermostatic cartridge reacts instantly to any change of water pressure and ensures water flow at the desired temperature.

Before the installation of concealed thermostatic bath and shower mixers, make sure that there are check valves in the nipples. In the absence of check valves, do not install your mixer as such.

For an efficient functioning of thermostatic mixers, the dynamic pressure of the hot and cold water installation should be at least 1 bar.

### FIELD APPLICATIONS

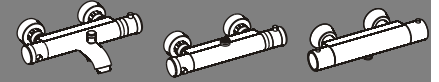
Thermostatic mixers have been designed for hot water supply through booster pumps and provide the most correct temperature when used in that way.

All thermostatic products are adjusted for 3 bars flow pressure applied in both directions in the factory.

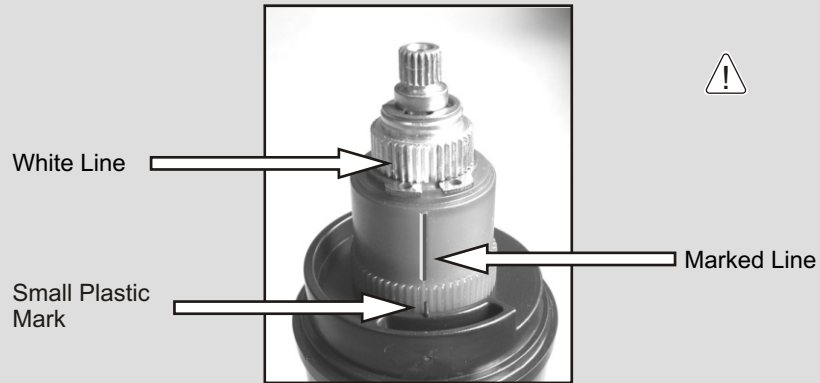
These products are compatible for heaters with a minimum power of 18kW-250Kcal/min.

These products cannot be used with unpressurized heaters (free-flow solar heaters, instant water heaters etc.).

## THERMOSTATIC HANDLE INSTALLATION



- 1** White line, marked line and the small plastic mark must be aligned.



- 2** The number "38" must be aligned with the white line on the ring.

